



THE UNIVERSITY
OF QUEENSLAND
AUSTRALIA

CREATE CHANGE

Welcome to the Bachelor of Social Science & Bachelor of Arts / Social Science

With

- Program Director, **Professor Cameron Parsell**
- SoSS Student Admin team: Ms Claire Bishop

Acknowledgment of **Country**

The University of Queensland (UQ) acknowledges the Traditional Owners and their custodianship of the lands on which we meet.

We pay our respects to their Ancestors and their descendants, who continue cultural and spiritual connections to Country.

We recognise their valuable contributions to Australian and global society.



Welcome from the Program Director

Professor Cameron Parsell

c.parsell@uq.edu.au

Level 4, Michie Building (09)



What's happening today?

1. Welcome and key program info
2. Get to know your peers and key teaching staff
3. Key dates
4. School admin support
5. Opportunities and staying connected

Social Science at UQ

Social Scientists are interested in how societies work, how they come to be the way they are and how they might be different

- The Bachelor of Social Science is ***multidisciplinary***
- Learning and teaching has an ***applied*** (research and policy) focus
- Students collaborate with skilled practitioners, researchers and **industry**

Disciplines look at challenges differently, but complementarily



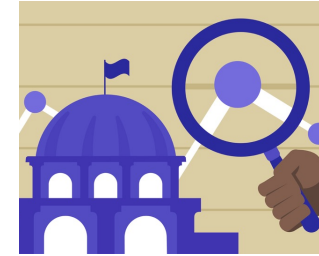
Psychology



Geography



Anthropology



Political Science



Economics



THE UNIVERSITY
OF QUEENSLAND
AUSTRALIA

CREATE CHANGE

Terminology

UQ, HASS Faculty, School of Social Science & BSocSci

Important terms



Your University

Central
Faculty
School



Your Degree

Program
Plan

- Minor
- Major
- Extended major



Your Courses

Course

- Compulsory
- Elective

Unit

ECP

Blackboard

Course & Program Related Terminology

HASS	=	Humanities, Arts and Social Sciences (our Faculty)	
Faculty	=	Home of related Schools	e.g. Humanities and Social Sciences
School	=	Home of related study areas	e.g. School of Social Science
Program	=	Degree or study area	e.g. Bachelor of Social Science
Major/Plan	=	Study Areas	e.g. Dev. Hlth & Soc. Policy Environ & Soc.
Course	=	Subject/Class	e.g. SOSOC1000
Unit (#)	=	Value of the course	e.g. 2 (almost always 2, SOSOC3202 is 4)
Semester	=	Duration of courses	e.g. approximately 16 weeks



THE UNIVERSITY
OF QUEENSLAND
AUSTRALIA

CREATE CHANGE

Understanding your Program Structure

And Options: BSocSc or BA / BSocSc

Graduate with a Bachelor of Social Science

You are required to complete:

- The 7 **core courses** from the BSocSc list (16 units)
- 8 courses (5 core) **in your chosen Major** (16 units), and
- up to 8 courses of **electives** (16 units) from the BSocSc course list

Note: no more than 14 units of elective courses can be at level 1 (course code starts with 1, e.g. SOSC1xxx).

Make sure to follow the rules and requirements of your program for the year you commenced!

<https://my.uq.edu.au/programs-courses>

Graduate with a Bachelor of Arts/ Social Science

- Design your program using the Dual Program Planner available on Programs and Courses (<https://my.uq.edu.au/programs-courses/>)
 - Search: BSocSc/BA

Take into account:

- For the BA you must complete 2 majors (each 8 courses/ 16 units), or an extended major (12 courses/ 24 units) and a minor (4 courses/ 8 units)
- For the BSocSc you must complete all core courses, a major and electives

Using the Bachelor of Social Science as a study pathway towards a different Bachelor degree at UQ?

This is okay – although we do hope that you choose to stay with us!

Please note –

The program rules for the Bachelor of Social Science stipulate that students must complete their first 4 units from the BSocSc core course and / or BSocSci Major course list.

Should you have any questions about your BSocSc enrolment please contact the Student Admin team:
student.socsci@uq.edu.au

Compulsory core courses from the BSocSc list in Year 1

SOSC1000 Society, Challenges & Solutions:
Introduction to the Social Sciences (offered in Sem 1)
– Dr Zoe Staines



POLS1102 Introduction to Politics & Public Policy (offered in Sem 1)
– A/Prof Alastair Stark



Compulsory core courses from the BSocSc list in Years 2 and 3

Year 2

SOCY2019 Introduction to Social Research

SOCY2339 Introducing Quantitative Research

Year 3

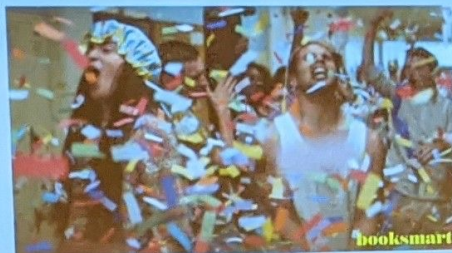
SOCY3329 Qualitative Social Research

[**SOSC3201** Research, Planning and Design + **SOSC3202** Project (#4)]

The Project Course Showcase

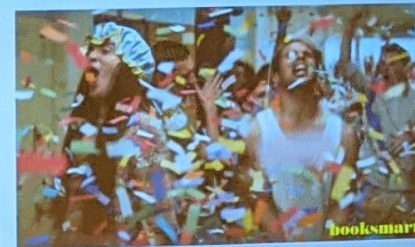
Go Celebrate!

But keep it COVID safe!



Go Celebrate!

But keep it COVID safe!





THE UNIVERSITY
OF QUEENSLAND
AUSTRALIA

CREATE CHANGE

Understanding your Program Structure

And Options: Majors

Bachelor of Social Science Majors



Development

Analyse the social effects of int'l and community development, with an emphasis on alleviating poverty & inequality and developing sustainable societies.



Environment & Society

Explore the intersections between socio-political processes and environmental problems, to address issues of climate change and waste.



Health & Social Policy

Investigate inequalities in health & illness while learning to develop, implement and evaluate policy solutions to produce positive change.

Development Major

Convenor:

Professor Katharine Gelber

k.gelber@uq.edu.au



What do you study for a Development major?

Required Courses (10 units)

POLS1701 Introduction to International Inequality and Development

SOCY2220 Globalisation and Development in Post-Colonial Societies

SOSC2288 Community Development: Local and International Practices

ABTS3020 Working with Indigenous People

ANTH3019 Development Practice and Social Impact

Elective Courses (6 units) [sample]

ANTH2060 Ecology, Culture and Field Research

SOCY2020 Sociology of the Environment

POLS2404 The Political Dynamics of Development and Resistance

Environment and Society Major

Convenor:

Professor Kristen Lyons

kristen.lyons@uq.edu.au



What do you study for a Environment and Society major?

Required Courses (10 units)

ENVM1501 Introduction to Environmental Studies

ANTH2060 Ecology, Culture, and Field Research

SOCY2020 Sociology of the Environment

ABTS3020 Working with Indigenous People

POLS3115 Environmental Politics and Policy

Elective Courses (6 units) [sample]

GEOS1100 Environment and Society

PHIL2210 Environmental Philosophy

SOCY2340 An Urban World

Health and Social Policy Major

Convenor:

Professor Katharine Gelber

k.gelber@uq.edu.au



What do you study for a Health and Social Policy major?

Required Courses (10 units)

We strongly advise you to take these courses in your first semester

POLY1000 Australian Social Policy

SOCY1030 Introduction to Health, Illness and Society

For further assistance with your program planning contact the School of Social Science Student Administration Team

Elective Courses (6 units) [sample]

PUBH1103 Health Systems and Policy

Course enrolment & tutorial sign-on

- Log into [Starting at UQ](#). Go to mySI-net to enrol in courses.
- Once you are enrolled in a course, you should be able to see what class allocations are required in myTimetable.

Textbooks

Wait until Week 1 to work out what textbooks you should get

- **Buy:** [The School Locker](#) or [Second-hand Texts & Stationary](#)
- **Print:** [UQ Print](#)
- **Borrow:** [UQ Library](#)

Enrolling, Tutorials and Class Allocations

- First stop: 'Starting at UQ'.
- You can add / drop your courses on SI-net
- myTimetable is used to preference and allocate into classes. If you have options for tutorial times, you can preference classes prior to the university running the class allocation process.
- New video tutorials for class timetabling [Enrolment and class allocation - my.UQ - University of Queensland](#)
- If there is a problem with class allocation, e-mail the relevant faculty area for the owner of the course e.g. HASS Faculty = hass.mytimetable@uq.edu.au
- If all else fails, myUQ has the answer or contact the School's student admin team: student.socsci@uq.edu.au



Where do I get help?

Support systems and who does what

Student Services (Central UQ)

- Learning Assistance
- Disability Support
- Counselling Services
- International Student Services
- Careers & Employment Services
- Accommodation
- Multi-faith chaplaincy
- Lots of workshops for skill development & support
- Located across from the main food outlets (specifically Boost & the Bakery)

ALL FREE!



School of Social Science Library Services

Get help with:

- Finding assignment resources
- Search strategies and using databases
- Book purchase requests
- Referencing
- Using EndNote

Debbie Martin

Liaison Librarian

d.martin@library.uq.edu.au



Or visit library.uq.edu.au



Photo by [Maya Maceka](#) on [Unsplash](#)

Get support

HASS Student Administration Team

- Degree questions
- Credit requests
- Academic progress
- Overseas study approval

Contact

hass.uq.edu.au/contact

School Student Administration Team

- Course questions
- Timetables
- Assessment

Contact

<https://social-science.uq.edu.au/student-support>

HASS Student Futures Team

- Extra-curricular opportunities
- Career mentoring and seminars
- Leadership development

Contact

hass.uq.edu.au/enrich-your-study-experience

UQ Student Services

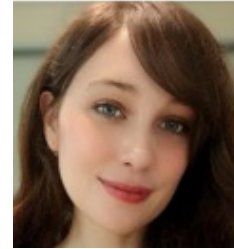
- Learning assistance
- Disability support
- Counselling
- International student services
- Accommodation
- Multi-faith chaplaincy

Contact

my.uq.edu.au/student-support

BSocSc Administration

Student Admin Team
School of Social Science
Level 3, Michie Building (#9)
student.socsci@uq.edu.au



Claire
Bishop



Kwame
Eshun



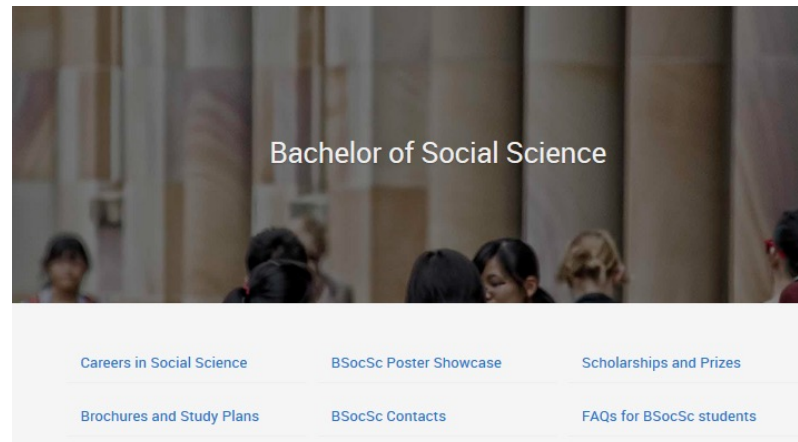
Itsumi
Miya-Jones

- Enrolment planning
- Questions about courses
- Assessment – SoSS extension requests, deferred examination applications
- How to contact academic staff
- UG Social Science Events
- Support for student society
- Anything really – we can help point you in the right direction!

Our main office is on level 3 of the Michie Building

Open 9am-12pm & 1pm-4pm Mon-Fri.

BSocSc Website



You will receive updates on program activities and news via your student email. You can access information on the program via the website.

Why choose Bachelor of Social Science

UQ's Bachelor of Social Science degree is unique in its approach and delivery, with a strong grounding in social justice, policy research, and strong links to industry. It provides a foundation of knowledge about key social issues and problems, while also fostering practice-based skill development for immediate entry into the workforce, including skills in public policy design and evaluation, social impact assessment, social planning and research.

The Bachelor of Social Science provides a diversity of skills that will enable you to work in areas that address pressing social issues at local, national and international levels. Amongst these are rising poverty and inequality, the gender pay gap, homelessness, unemployment, Indigenous peoples and injustice, health and illness, refugees and the social impacts of climate change. Graduates develop skills, values and knowledge that are sought after by employers in the public and private sector, as well as non-government organisations, including the ability to communicate effectively across diverse audiences, theoretically informed cross-cultural awareness, social research skills, and a strong ethical compass. Course work provides in-depth knowledge and skills related to social issues, the ability to identify and analyse social issues and problems, and to develop solutions based in policy and practice.

Development

Students are provided with a social science perspective on international and community development issues. Students focus on strategies to alleviate poverty and inequality and develop sustainable societies, communities and environments.

Health and Society

Students gain an understanding of the social and ethical factors influencing health and illness. Focus is placed on the way the health system works, and gaining the skills relevant to becoming a social science worker in health care.

Social and Public Policy

Studies in policy connect the social sciences to the world of practical politics. Students gain the technical skills required to analyse social and economic issues and develop, implement and evaluate policy solutions.

Environment and Society

Students will learn about the relationships between environmental problems - such as climate change, waste and land clearing - and broader social, political and economic contexts. With new analytical and research skills, graduates can work in policy making, environmental and science communication, international development and elsewhere.



THE UNIVERSITY
OF QUEENSLAND
AUSTRALIA

CREATE CHANGE

Important Dates

Write these down!

Important dates

July 3 – 9am

My Timetable preferencing closes Semester 2 2023

July 17 - 21

Orientation Week S2 2023

July 24

Classes commence S2 2023

August 4

Last day to add a course or alter enrolment for Semester 2 2023

August 31

“The Census Date”

Last date to **drop** Semester 2 2023 courses or cancel enrolment without
financial liability

August 31

Academic Integrity Module A due Semester 2 2023

October 28

Academic Integrity Module B due Semester 2 2023



THE UNIVERSITY
OF QUEENSLAND
AUSTRALIA

CREATE CHANGE

Your Opportunities in HASS and settling into university life

HASS Welcome Weeks

O Week

- Program Info Session
- HASS Welcome
- Student Admin Drop in's
- Missed out? Find resources on the website

Connect Week

- Connect with your peers
- Attend a club or society event

Success Week

- Learn about how you can be a successful HASS student
- Discover the support services that you **SHOULD** access

Employability Week

- Where can your program take you?
- Attend the networking night to meet peers and industry

Common Questions about uni life

- **UQ facilities:** *Where's the best place on campus to attend online lectures/tutorials? Where's the best place to get coffee/food?*
- **Social activities:** *How do I join a student club? How can I get involved in uni life both on and off campus?*
- **General tips for new students:** *What is your top tip for starting out at UQ?*

Find study space at UQ

- [Use a 24/7 study space](#)
- [Book a study room](#)
- [Know what's available in the library](#)
- Check out Level 3 Forgan Smith Tower study space

Join a student club

- [200+ UQ Union clubs and societies](#)
- Cultural, hobby/special interest, international, performance, religious, social justice, political, faculty and much more

EQUITY, DIVERSITY, & SAFETY

**We are committed to a safe and supportive environment
and a positive culture for all.**

- **Dr Jenny Munro** - dedicated **Diversity and Equity Officer**, in School of Social Science
- Available to help any students or staff in relation to equity issues, grievances, complaint processes, bullying, sexual harassment and assault
- Jenny is not a counsellor but she can provide a safe space and a useful starting place to work out what options are available. If you have any concerns or queries, are unsure who to talk to, or are simply feeling uncomfortable about something that has happened, Jenny can help you find the information or support that you need
- Please contact Jenny directly via email at jenny.munro@uq.edu.au to find out more about the role, or to make a time for a confidential discussion.

- Equity issues
- Grievances
- Complaint processes
- Bullying
- Sexual harassment
- Assault



**RESPECT.
NOW.
ALWAYS.**

Stay Connected



UQ Humanities & Social Sciences



UQ Humanities & Social Sciences

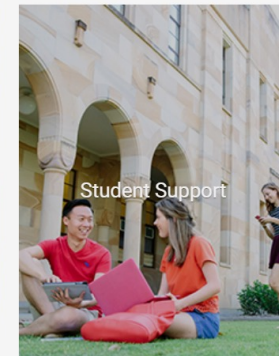
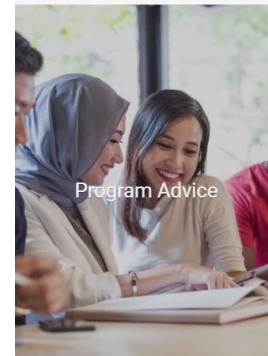
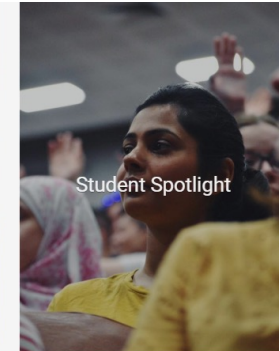
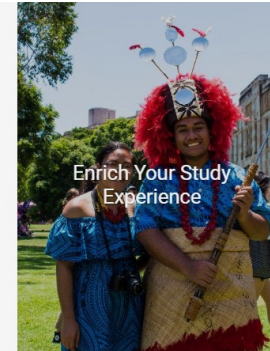
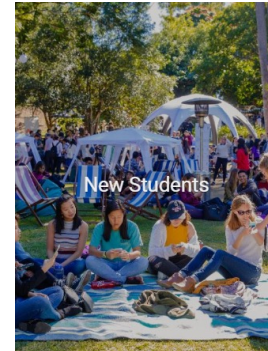


uqhasslife



How2HASS

The home of HASS online
linktr.ee/uqhasslife





Quick Survey

We really value your feedback as it allows us to improve for the future. Please complete this 3 minute survey.

