



THE UNIVERSITY
OF QUEENSLAND
AUSTRALIA

CREATE CHANGE

Semester 2 2024 Orientation

Welcome to Bachelors of Education (Secondary)

Assoc. Prof. Garth Stahl

Email: g.stahl@uq.edu.au

secondarydirector@uq.edu.au

Acknowledgment of Country

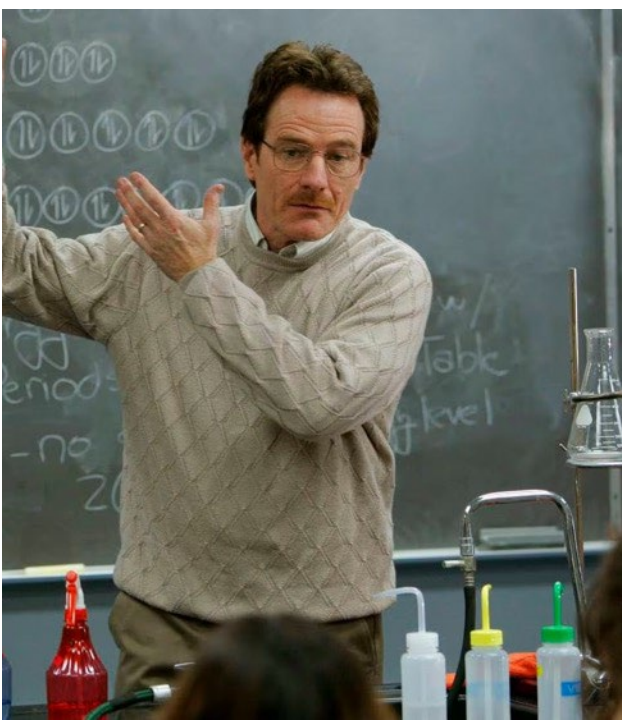
The University of Queensland (UQ) acknowledges the Traditional Owners and their custodianship of the lands on which we meet.

We pay our respects to their Ancestors and their descendants, who continue cultural and spiritual connections to Country.

We recognise their valuable contributions to Australian and global society.



We are so glad you are here

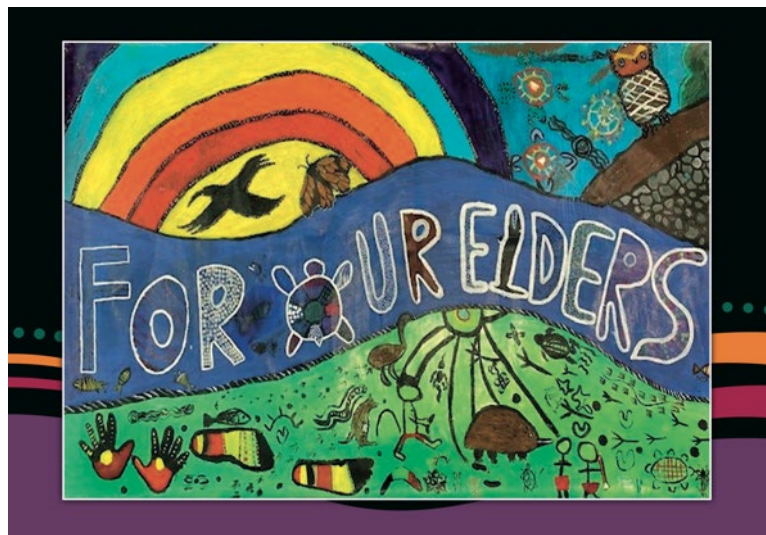


What are qualities of a teacher and the teaching profession?



How I Describe Teaching...

- Knowledge
- Opportunity
- Rewards



Pointers

Get to know your instructors

Be an active learner

Ask when you don't understand

Question to further thinking

Take advantage of the services/offerings at UQ

ATTEND CLASSES!!!



What's happening today?

1. Welcome
2. Understanding your program structure
3. Preparing for your courses
4. Settling into university life



THE UNIVERSITY
OF QUEENSLAND
AUSTRALIA

CREATE CHANGE

1. Welcome

School Staff

Head of School

Professor Robin Shields

Deputy Head of School

Associate Professor Jodie Miller

Director of Teaching and Learning

Associate Professor Carmen Mills

Director of Secondary Preservice Programs

Assoc. Prof. Ian Hardy (Acting; Semester 1)

Assoc. Prof. Garth Stahl (Semester 2)

secondarydirector@uq.edu.au

Course Coordinators

Various

Director of Professional Experience

Brianna Bright

Professional Staff Team

Jeanette Bray

General Enquiries

education@uq.edu.au

07 3365 6550

Important terms



Your University

Central
Faculty
School



Your Degree

Program
Plan

- Minor
- Major
- Extended major



Your Courses

Course

- Compulsory
- Elective

Unit

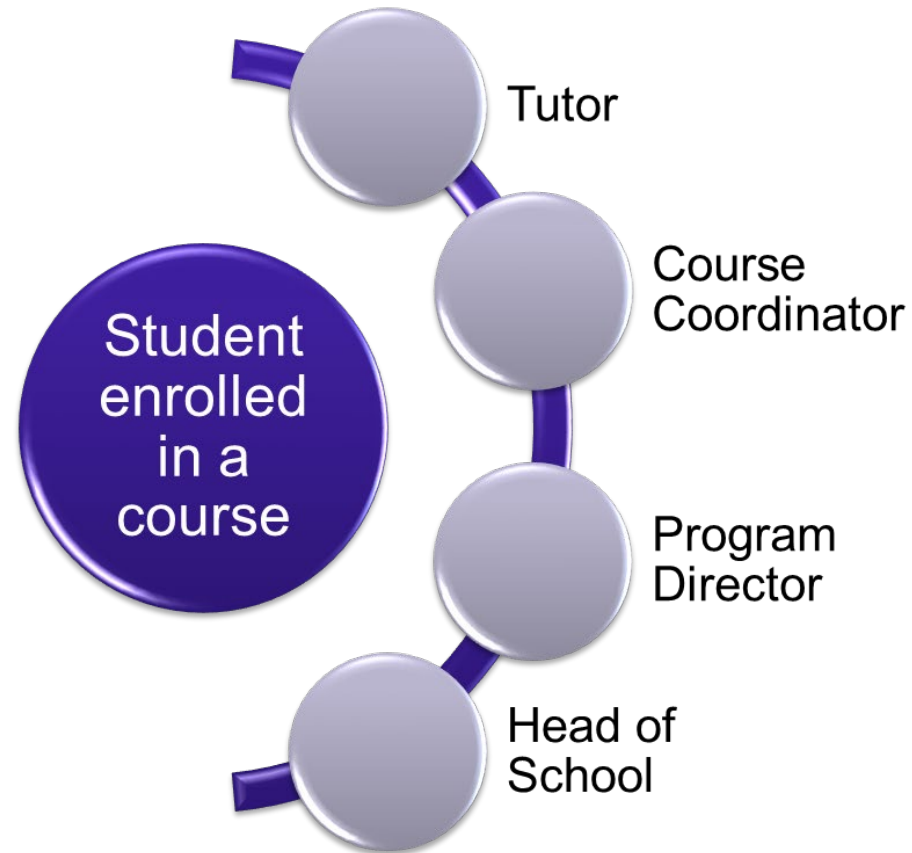
ECP

Blackboard

Course & Program Related Terminology

HASS	=	Humanities Arts and Social Sciences (our Faculty)	
Faculty	=	Home of related Schools	eg: Humanities and Social Sciences
School	=	Home of related study areas	eg: School of Education
Program	=	Degree or study area	eg: Bachelor of Arts/Bachelor of Education
Major/Plan	=	Study Areas	eg: History, French
Course	=	Subject/Class	eg: PHSS2000
Unit (#)	=	Value of the course	eg: 2 (almost always 2)
Semester	=	Duration of courses	eg: approximately 13 weeks

How a School fits together





Welcome to the profession

Why do you
want to be a
teacher?

Important dates

Monday 15 July - Friday 19 July

Orientation Week for Semester 2, 2024

Monday 22 July

First day of classes for Semester 2, 2024

Friday 2 August

Last day to add a course for Semester 2, 2024

Saturday 31 August

Census Date

Last date to **drop** Semester 2, 2024 courses or cancel enrolment without **financial** liability

Monday 30 September

Last date to **drop** a course for Semester 2, 2024 or cancel enrolment without **academic** liability



THE UNIVERSITY
OF QUEENSLAND
AUSTRALIA

CREATE CHANGE

2. Understanding your program structure

Program Enrolment Pattern

- Your program is not a collection of random courses haphazardly thrown together!
Follow the program structure!!!
- Your entire program is mapped against the Australian Professional Standards for Teachers (APST) graduate standards.
- The APST comprises 37 individual standards contained within 7 overarching standards.
- Each standard is explicitly addressed in coursework throughout your program of study.

Program rules & Structure

Always refer to the
Programs and Courses website
for your official program rules
and structure:

<https://my.uq.edu.au/programs-courses/>

my.UQ - The University of Queensland, Australia

The screenshot displays the my.UQ website interface. At the top, there is a purple header with the University of Queensland logo and the text 'my.UQ'. Navigation links include 'UQ HOME', 'CONTACTS', 'STUDY', 'MAPS', 'NEWS', 'EVENTS', 'LIBRARY', and 'MY.UQ'. A search bar is located on the right side of the header. Below the header, a dark blue navigation bar contains links for 'HOME', 'STARTING AT UQ', 'PROGRAMS AND COURSES', and 'FACULTIES AND SCHOOLS'. The main content area features a search bar with the text 'At UQ a degree is called a program and a subject is called a course.' and a button labeled 'All programs & courses'. Below the search bar, there are three columns of links: 'What can I study?' (including A-Z Undergraduate Programs, A-Z Postgraduate Programs, Higher Degrees by Research, Summer Semester courses, UQ College, and Study Abroad and Incoming Exchange), 'Browse by faculty' (including Business, Economics & Law, Engineering, Architecture & Information Technology, Health & Behavioural Sciences, Humanities & Social Sciences, Medicine, Science, and Graduate School), and 'Help and advice' (including UQ Answers, Student Centre, UQ Library, Fee calculator, AQF qualifications, and Courses and Programs Archive). On the right side, there is a purple box titled 'ON THIS SITE' with links to 'Starting at UQ', 'Programs and courses', and 'Faculties and schools'. The footer contains contact information for the University of Queensland, including the address 'Brisbane St Lucia, QLD 4072', phone number '+61 7 3365 1111', and other campuses 'UQ Gatton, UQ Herston'. It also mentions 'A MEMBER OF' with logos for 'UNIVERSITY OF QUEENSLAND', 'edX', and 'GROUP OF EIGHT'. There are links for 'Privacy & Terms of use | Feedback' and 'Authorised by: Academic Registrar ABN 63 942 912 684 CRICOS Provider No.00025B'. Social media links for Facebook, Twitter, YouTube, and LinkedIn are provided. The footer also includes 'QUICK LINKS' (For Media, Emergency Contact), 'EXPLORE' (Giving to UQ, Faculties & Divisions, UQ Jobs, UQ Contacts, Services & Facilities), and 'NEED HELP?' (UQ Answers, EMERGENCY Ph. 3365 3333).

Your Program

Important notes about your program:

You must meet two sets of program rules - official rules are on the Courses and Programs website www.uq.edu.au/study

- You are governed by the rules for the year that you **commenced** the dual program
- Education degree 'owned' and managed by HASS
- Non-education degree is 'owned' and managed by that faculty
 - Arts – HASS faculty;
 - Music – HASS
 - Business Management - BEL
 - Mathematics - Science
 - Science - Science



Program Structure

There are two parts to your program:

- **Part A:** Bachelor of Education + non-Education degree (3 years) [except Music (Honours), which is 4 years]
- Your non-Education degree provides the content required to teach your chosen subjects
- **Part B:** Bachelor of Education Professional Year (1 Year)
- Your Education degree provides the skills, knowledge and practical experience to teach in schools



Program rules & Structure

Always refer to the Programs and Courses website for your official program rules and structure:

<https://my.uq.edu.au/programs-courses/>

You can input 'Bachelor of Education Secondary' to bring up the different Programs.

my.UQ - The University of Queensland, Australia

The screenshot shows the my.UQ website interface. At the top, there's a navigation bar with links: UQ HOME, CONTACTS, STUDY, MAPS, NEWS, EVENTS, LIBRARY, MY.UQ. Below this is a search bar with the text "At UQ a degree is called a program and a subject is called a course." and a search button. The search results show "All programs & courses". Below the search bar, there are three columns of links: "What can I study?", "Browse by faculty", and "Help and advice". On the right, there's a "ON THIS SITE" section with links to "Starting at UQ", "Programs and courses", and "Faculties and schools". At the bottom, there's a footer with contact information, a "GROUP OF EIGHT" logo, "QUICK LINKS", "SOCIAL MEDIA", "EXPLORE", and "NEED HELP?" sections.

my.UQ - The University of Queensland, Australia

UQ HOME CONTACTS STUDY MAPS NEWS EVENTS LIBRARY MY.UQ

THE UNIVERSITY OF QUEENSLAND AUSTRALIA my.UQ

HOME STARTING AT UQ PROGRAMS AND COURSES FACULTIES AND SCHOOLS

At UQ a degree is called a program and a subject is called a course.

SEARCH PROGRAMS & COURSES All programs & courses

View search advice and tips

What can I study?

- A-Z Undergraduate Programs
- A-Z Postgraduate Programs
- Higher Degrees by Research
- Summer Semester courses
- UQ College
- Study Abroad and Incoming Exchange

Browse by faculty

- Business, Economics & Law
- Engineering, Architecture & Information Technology
- Health & Behavioural Sciences
- Humanities & Social Sciences
- Medicine
- Science
- Graduate School

Help and advice

- UQ Answers
- Student Centre
- UQ Library
- Fee calculator
- AQF qualifications
- Courses and Programs Archive

ON THIS SITE

- Starting at UQ
- Programs and courses
- Faculties and schools

THE UNIVERSITY OF QUEENSLAND AUSTRALIA

Brisbane St Lucia, QLD 4072
+61 7 3365 1111

Other Campuses:
UQ Gatton, UQ Herston

Maps and Directions
© 2018 The University of Queensland

A MEMBER OF

UNIVERSITY GROUP OF EIGHT

QUICK LINKS

- For Media
- Emergency Contact

SOCIAL MEDIA

Facebook Twitter YouTube LinkedIn

EXPLORE

- Giving to UQ
- Faculties & Divisions
- UQ Jobs
- UQ Contacts
- Services & Facilities

NEED HELP?

- UQ Answers
- EMERGENCY
- Ph. 3365 3333

Authorised by: Academic Registrar
ABN 63 942 912 684
CRICOS Provider No.00025B

Then refer to the Dual Degree Program Planner...

Bachelors of Arts / Education (Secondary)

Bachelors of Business Management / Education (Secondary)

Bachelors of Mathematics / Education (Secondary)

Bachelors of Music (Honours) / Education (Secondary)

Bachelors of Science / Education (Secondary)

<https://my.uq.edu.au/programs-courses/search.html?keywords=bachelor+of+education+%28secondary%29&searchType=all&archived=true>



THE UNIVERSITY
OF QUEENSLAND
AUSTRALIA

Create change

Dual Degree Program Planner

Bachelors of Arts / Education (Secondary) (BA/BEd(Sec))

Information valid for students commencing 2024

Show information for: 2024 [change](#)

[Australian](#) [International](#)

Duration
4 Years full-time (or part-time equivalent)

Commencing 2024
Semester 1 (19 Feb, 2024)
Semester 2 (22 Jul, 2024)

Program level	Units	Program code
Undergraduate	64	2066

Faculty
[Humanities Arts Social Science](#)

Teaching Location	Attendance mode
St Lucia	In Person

[Courses and requirements](#)

View the [courses and requirements](#) for courses that can be studied as part of the Bachelors of Arts / Education (Secondary).

Component Degrees
Component Degrees that make up the Bachelors of Arts / Education (Secondary):

- [Bachelor of Arts](#)
- [Bachelor of Education \(Secondary\)](#)

Dual Degree Planner
[Bachelors of Arts / Education \(Secondary\)](#)

Entry requirements
[See the Study at UQ website for admissions information](#)

Why study the Bachelors of Arts / Education (Secondary)?

This pre-service teacher education program is available only as a dual program. The Bachelor of Arts (BA) provides content knowledge for two teaching areas while the BEd(Sec) provides skills and knowledge for the teaching of this content. Teaching is a challenging and rewarding career, with secondary teachers in demand globally. This dual program prepares students for secondary school teaching, or industry training. The BEd(Sec) offers school based learning and draws on the latest research into effective teaching, ensuring graduates are well equipped to teach. The BA provides the content knowledge for two Year 7-12 Teaching Areas or a Year 7-12 Teaching Area and a Senior Specialist Teaching area. Year 7-12 Teaching Area majors are: Ancient History/History; Chinese or Chinese Translation and Interpreting; Drama; English; French or French Advanced; Geography; German; Japanese or Japanese Advanced; Mathematics; Music or Popular Music and Technology; and Spanish. Majors for Senior Specialist Teaching Areas are: Economics; Film and TV Studies; Legal Education Studies; Media and Digital Cultures; and Psychology. The Music Specialisation provides for both Year 7-12 Music Teaching Area and Choral and Instrumental Music as a Senior Specialist Teaching Area.

- ▶ [What you can study](#)
- ▶ [How to apply](#)
- ▶ [What it costs](#)
- ▶ [What you can do with a Bachelors of Arts / Education \(Secondary\)](#)
- ▶ [Program rules for the Bachelors of Arts / Education \(Secondary\)](#)



THE UNIVERSITY
OF QUEENSLAND
AUSTRALIA

Create change

Semester 1 Commencement Study Planner

	BACHELOR OF ARTS			BACHELOR OF EDUCATION		
	Course Code	Course Name	Units	Course Code	Course Name	Units
Year 1	Sem 1	(Level 1) course from Major 1	2	EDUC1710	A Sociological Orientation to Education	2
		(Level 1) course from Major 2	2			
		Course from Major 2	2			
	Sem 2	(Level 1) course from Major 1	2	EDUC1650	Learning and Development for Educators*	2
		Course from Major 1	2			
		(Level 1) Course from Major 2	2			
Year 2	Sem 1	Course from Major 1	2	EDUC2601	Literacies within and across the Curriculum	2
		Course from Major 2	2			
		Course from Major 2	2			
	Sem 2	Course from Major 1	2	EDUC2604	Teachers as Educational Innovators and Agents of Change*	
		Course from Major 2	2	EDUC2090	Indigenous Knowledge and Education	2
Year 3	Sem 1	Course from Major 1	2	EDUC3602	Numeracy across the Curriculum*	2
		Course from Major 1	2			
		Course from Major 2	2			
	Sem 2	Course from Major 1	2	EDUC3605	Building Professional Knowledge**	2
		Course from Major 2	2	EDUC3606	Building Inclusive Secondary Classrooms	2
Year 4	Sem 1			EDUC4615	Developing Professional Practice***	2
				EDUC4620	Teachers as Researchers	2
				EDUC4XXX	BEd(Sec) Professional Year Curriculum Studies Course (year-long course)	-
				EDUC4XXX	BEd(Sec) Professional Year Curriculum Studies Course (year-long course)	-
	Sem 2			EDUC4607	Assessment for Learning and Teaching	2
				EDUC4625	Achieving Professional Engagement***	2
				EDUC4XXX	BEd(Sec) Professional Year Curriculum Studies Course (year-long course)	4
				EDUC4XXX	BEd(Sec) Professional Year Curriculum Studies Course (year-long course)	4

* This course includes 5 weeks of professional experience

Planning According to Program Structure

<https://www.uq.edu.au/study/docs/dual-degree-planners-2024/2024-Bachelors-of-Arts-Education-Secondary-2066.pdf>



THE UNIVERSITY
OF QUEENSLAND
AUSTRALIA

Create change

Bachelor of Education (Secondary) dual degree programs – from 2024

	Semester 1				Semester 2				Notes
Year 1	EDUC1710 A sociological orientation to education #2	# 2 unit non-education course	# 2 unit non-education course	# 2 unit non-education course	EDUC1650* Learning and development for educators #2	# 2 unit non-education course	# 2 unit non-education course	# 2 unit non-education course	* <u>includes</u> 5 single days professional experience
Year 2	EDUC2601* Literacies within and across the curriculum #2	# 2 unit non-education course	# 2 unit non-education course	# 2 unit non-education course	EDUC2090 Indigenous knowledge and education #2	EDUC2604 Teachers as educational innovators and agents of change #2	# 2 unit non-education course	# 2 unit non-education course	* <u>includes</u> 10 single days professional experience



Year 3	EDUC3602 Numeracy across the curriculum #2	<u># 2 unit</u> non-education course	<u># 2 unit</u> non-education course	<u># 2 unit</u> non-education course	EDUC3606 Building inclusive secondary classrooms #2	EDUC3605* Building professional knowledge #2	<u># 2 unit</u> non-education course	<u># 2 unit</u> non-education course	* <u>includes</u> 5 single days plus 10 day block of professional experience after exam block
Year 4	EDUC4620 Teachers as researchers #2	EDUC4615* Developing professional practice #2	Curriculum Studies course from Part C #4 year long	Curriculum Studies course from Part C or D #4 year long	EDUC4607 Assessment for learning and teaching #2	EDUC4625** Achieving professional engagement #2	Curriculum Studies course from Part C (cont'd) #4 <u>year long</u> (cont'd)	Curriculum Studies course from Part C or D (cont'd) #4 <u>year long</u> (cont'd)	* <u>includes</u> 30 day block of professional experience ** <u>includes</u> 30 day block of professional experience

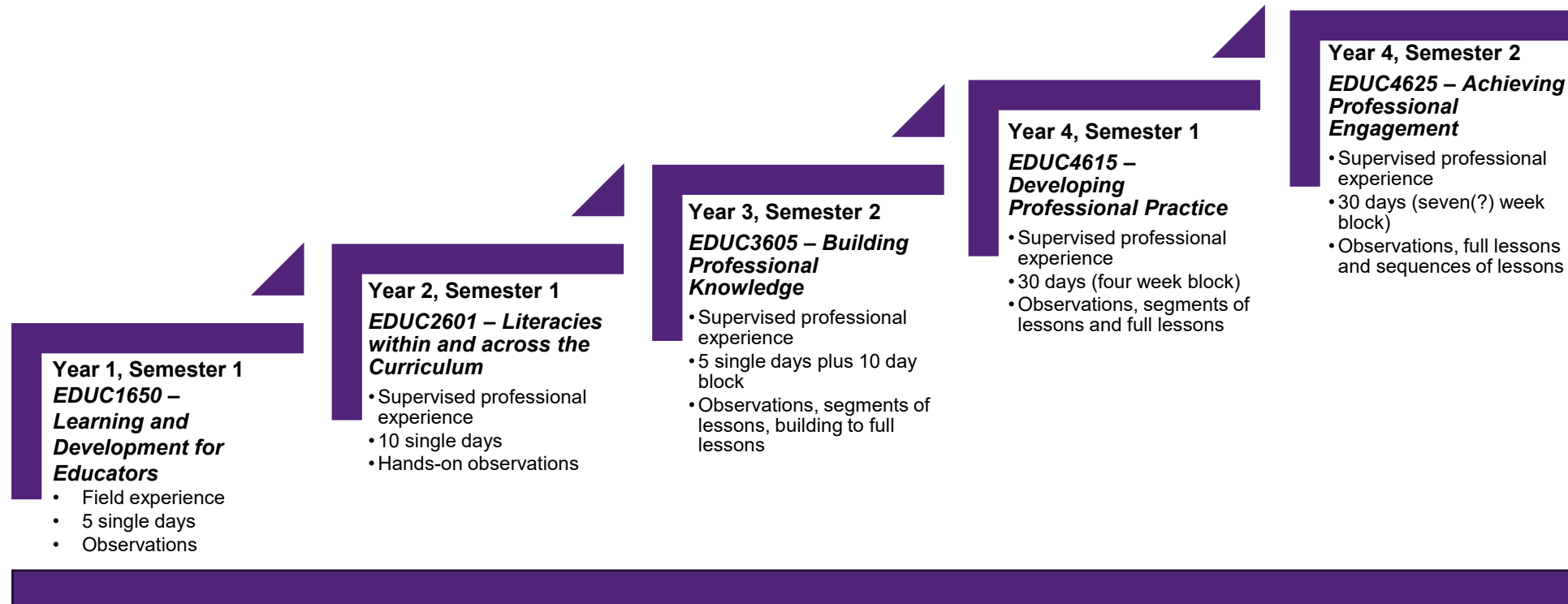


Program Structure

- Decisions need to be made now about your **teaching areas**
- The Dual Program Planner – use it to help guide your course selection and to ensure that you are on track in your studies (particularly with what Education courses to take when)
- Part A; the non-Education degree, must be completed before progressing to the Professional Year; Part B
- The timetable will have an impact on course selection



Bachelor of Education (Secondary) Dual Degrees: The Developmental Continuum for Professional Experience



2024 Professional Experience Calendar

2024 Professional Experience Calendar
University of Queensland - School of Education



University Dates			BEd Secondary Dual Degree*				MTeach Secondary		BEd Primary				MTeach Primary		QLD Schools
Week No.	UQ Week	Week Begins	Year 1	Year 2	Year 3	Year 4	Year 1	Year 2	Year 1	Year 2	Year 3	Year 4	Year 1	Year 2	
4 ^A		22-Jan													Term 1
5		29-Jan													Week 2
6		5-Feb													Week 3
7	O	12-Feb	Orientation			Professional Foundations	Orientation	Professional Foundations	Orientation			Professional Foundations	Orientation	Professional Foundations	Week 4
8	1	19-Feb													Week 5
9	2	26-Feb		EDUC2601 Friday each week											Week 6
10	3	4-Mar													Week 7
11	4	11-Mar													Week 8
12	5	18-Mar													Week 9
13 ^A	6 ^A	25-Mar		Good Friday											Week 10
14 ^A		1-Apr	UQ Mid Semester Break												QLD School Holidays
15	7	8-Apr													Term 2
16	8	15-Apr		EDUC2601 Friday each week	EDUC3602 Friday each week <small>(2024 final year this placement is offered)</small>	EDUC4615 6 week block placement		EDUC7615 6 week block placement	EDUC1740 Friday each week					EDUC7535 6 week block placement	Week 2
17 ^A	9 ^A	22-Apr											Week 3		
18	10	29-Apr											Week 4		
19 ^A	11 ^A	6-May											Week 5		
20	12	13-May													Week 6
21	13	20-May							EDUC1740 1 week block						Week 7
22		27-May	Revision Week			Final Week of Classes	EDUC7601 1 week observation	Final Week of Classes	Revision Week			EDUC7550 1 week observation	Final Week of Classes	Week 8	
23		3-Jun	Examinations												Week 9
24		10-Jun													Week 10
25		17-Jun													QLD School Holidays
26		24-Jun													Term 3
27		1-Jul	UQ Inter Semester Recess												
28		8-Jul													

Available on the School of Education website.

A great resource that will help you plan each year!

Link to calendar:

<https://education.uq.edu.au/files/19613/2024%20Teacher%20Preparation%20Calendar.pdf>

25		17-Jun	UQ Inter Semester Recess										Week 10	
26		24-Jun											QLD School Holidays	
27		1-Jul											Term 3	
28		8-Jul											Week 2	
29	O	15-Jul	Orientation			First Week of Classes		First Week of Classes			First Week of Classes		First Week of Classes	Week 3
30	1	22-Jul												Week 4
31	2	29-Jul												Week 5
32	3	5-Aug												Week 6
33^	4^	12-Aug												Week 7
34	5	19-Aug												Week 8
35	6	26-Aug												Week 9
36	7	2-Sep	EDUC1650 Friday each week observation		EDUC3605 Friday each week									Week 10
37	8	9-Sep												QLD School Holidays
38	9	16-Sep												Term 4
39		23-Sep	UQ Mid Semester Break										Week 2	
40	10	30-Sep	EDUC1650 Friday each week observation		EDUC3605 Friday each week		EDUC7605 2 week block placement					EDUC7530 2 week block placement		Week 3
41^	11^	7-Oct												Week 4
42	12	14-Oct												Week 5
43	13	21-Oct												Week 6
44		28-Oct	Revision Week					EDUC2740 3 week block placement	Revision Week				Week 7	
45		4-Nov	Examinations						Examinations				Week 8	
46		11-Nov											Week 9	
47		18-Nov			EDUC3605 2 week block placement									Week 10
48		25-Nov												Week 11
49		2-Dec				Graduation		Graduation			Graduation		Graduation	
50		9-Dec				Graduation		Graduation			Graduation		Graduation	

Approval date:20 September 2023

IMPORTANT NOTE: This calendar is subject to change.

Professional Experience Secondary		Professional Experience Primary	
Classes	Vacation	QLD School Term	^ Public Holiday/PD Day

Key important features – Professional Experience

Registering for PEx – <https://my.uq.edu.au/information-and-services/manage-my-program/placements>

or find it on your my.UQ dashboard.

Your placement is based on the following data:

- Your current suburb and street address recorded on your InPlace Registration page, which may differ from your SINET TERM address
- Your mode of transport – ticking public transport does not necessarily mean a closer school. You may be required to travel 90 minutes by public transport
- Your interest in attending faith-based schools (Catholic Education, Lutheran, etc)
- Conflict of Interest
- Once verified, your details cannot be changed without an email to education@uq.edu.au

Please update your InPlace registration page with the above information ASAP. For more information, visit: <https://education.uq.edu.au/professional-experience-pex>

> Information for Students > InPlace Student Registration Details

Key important features – Professional Experience

Rural and remote placements are encouraged where possible

- Information on Regional, Rural & Remote placements is also available on our website: <https://education.uq.edu.au/professional-experience-pex>
> Information for Students > Regional, Rural & Remote PEx Placements (RRR).
- Financial assistance for State School placements can be applied for through a *Regional Professional Experience Grant and Beyond The Range Professional Experience Grant*
via Teach Queensland: <https://teach.qld.gov.au/scholarships-and-grants/beyond-the-range-professional-experience-grant>

Organisation of Professional Experience

- The School of Education Placement Officers organise **ALL** professional experience placements.
- We do not collect individual preferences. Exceptional circumstances will be considered on a case-by-case basis.
- The University is governed by an Industrial Agreement where students are NOT to organise their own placements.
- Each student must read and agree to abide by the Professional Experience Policies and Procedures document prior to every professional experience.

Key important features – Blue Cards

- All students must have a valid Blue Card.
- Applications, renewals and cards from other organisations must be registered/applied for via the blue card online application portal: see instructions on the School of Education page <https://education.uq.edu.au/our-students/blue-card-information>
- Remains current for three years

- Student's responsibility to check the renewal date
- Must carry the card on you at all times when on placements or visiting schools
- Failure to have a valid Blue Card can result in large fines for the University, the School and the student
- No Blue Card = No prac!



Key important features – LANTITE

Facilitated by ACER - Initial teacher education students' personal literacy and numeracy skills to ensure teachers are well equipped to meet the demands of teaching

All preservice teachers must meet the benchmark of both LANTITE tests to be eligible to graduate. See link below for 2024 test dates. Make sure you register by 3 April 2024:

<https://teacheredtest.acer.edu.au/register/test-dates>

Test dates

Registration and test window dates for 2024 are provided below.

Test Window	Registration opens ^	Registration closes ^	Test window dates *
2024 Window 1	9 January 2024	22 January 2024	12 February 2024 - 25 February 2024
2024 Window 2	3 April 2024	16 April 2024	6 May 2024 - 19 May 2024



YOU MUST TAKE THE LANTITE TEST IN YOUR FIRST YEAR

LANTITE con't

- You will be contacted by School of Education staff via your UQ email address during your program to encourage you to register for a testing window.
- More information, including registration, sample test questions and FAQs are available at:
<https://teacheredtest.acer.edu.au>



LANTITE 2024

The first three windows of 2024 (up to August 2024) are part of an important LANTITE trial.

For the duration of the trial (four test windows), enrolled ITE students in all states or territories will be able to have uncapped attempts. This means that candidates who attempt the test during the trial will not have their failed attempts recorded as attempts when the trial ends. If you meet the test standard during the trial, it will count for the purpose of meeting the standard.

If you attempt the test during the trial, you will also receive improved feedback in the form of a Described Proficiency Scale that describes skills tested and outlines skills required to achieve better results and progress from one band to the other.

To take advantage of uncapped test attempts during the trial, simply register for the test window you wish to sit.

Reminder: Academic Integrity Modules (AIM)

Please complete the Academic Integrity Modules.

<https://web.library.uq.edu.au/library-services/it/learnuq-blackboard-help/academic-integrity-modules>



THE UNIVERSITY
OF QUEENSLAND
AUSTRALIA

CREATE CHANGE

3. Preparing for your courses

Course enrolment & tutorial sign-on

- Log into [Starting at UQ](#). Go to mySI-net to enrol in courses.
- Once you are enrolled in a course, you should be able to see if tutorial sign-on is required. If not, this will be covered in your first lecture.
- If you have a problem with sign-on, email your school admin team.

Textbooks

Wait until Week 1 to work out what textbooks you should get

- **Buy:** [The School Locker](#) or UQ Union Second Hand Textbooks (<https://www.uqusecondhandtexts.com/>)
- **Print:** [UQ Print](#)
- **Borrow:** UQ Library
- **Remember:** Many books/texts are available as e-books through the library.

UQ Portals

MyUQ – Access to everything:

- student email account – check regularly!
- mySi-net: enrolment, dropping courses, fee information, semester grades, GPA etc.
- Allocate+ : class sign-on, timetable
- Blackboard (e-learning): School of Education community noticeboard, important course announcements, individual assessment grades etc.
 - Turnitin: assessment submission (unless otherwise specified, e.g. prac reports through blackboard)
- Electronic Course Profiles (ECPs): Courses and Programs website, provides course outline, learning resources, assessment information, course coordinator contact details etc.





THE UNIVERSITY
OF QUEENSLAND
AUSTRALIA

CREATE CHANGE

4. Settling into university life

Top 5 tips from Final year students

1. Attend your lectures and tutorials!
2. Make friends.
3. Be organised and don't leave assignments to the last minute.
4. Get involved – at uni– develop a positive social network.
5. Be involved with your prac. – show initiative – again, create networks.

Find study space at UQ

- Use a 24/7 study space
- Book a study room
- Know what's available in the library
- Check out Level 3 Forgan Smith Tower study space

Join a student club

- 200+ UQ Union clubs and societies
- Cultural, hobby/special interest, international, sporting, performance, religious, social justice, political, faculty and much more ...



COME AND JOIN US AT

UQ EDUCATION SOCIETY



Get support

HASS Student Administration Team

- Degree questions
- Credit requests
- Academic progress
- Overseas study approval

Contact

hass.uq.edu.au/contact

School Student Administration Team

- Course questions
- Timetables
- Assessment

Contact

hass.uq.edu.au/your-academic-resources

HASS Student Futures Team

- Extra-curricular opportunities
- Career mentoring and seminars
- Leadership development

Contact

hass.uq.edu.au/enrich-your-study-experience

UQ Student Services

- Learning assistance
- Disability support
- Counselling
- International student services
- Accommodation
- Multi-faith chaplaincy

Contact

my.uq.edu.au/student-support

Stay Connected



UQ Humanities, Arts & Social Sciences

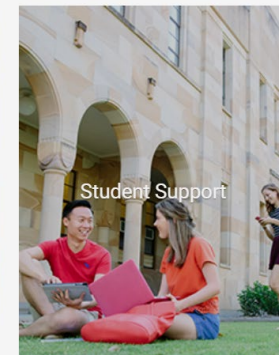
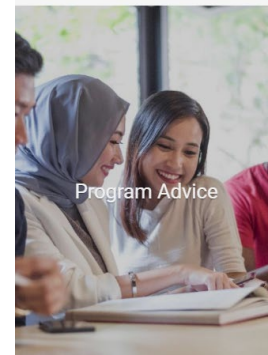
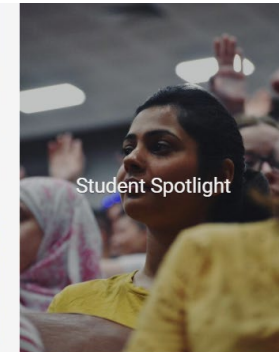
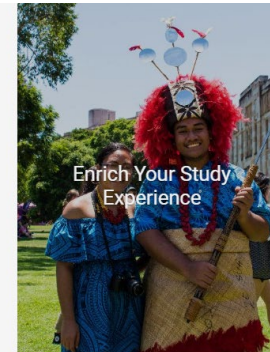
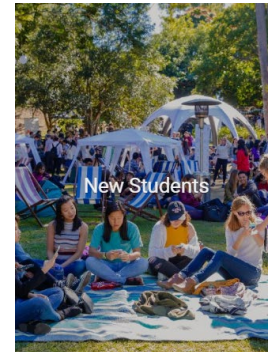


UQ Humanities, Arts & Social Sciences



@uqhasslife

The home of HASS online
linktr.ee/uqhasslife





Quick Survey

We really value your feedback as it allows us to improve for the future. Please complete this 3 minute survey.





Where do I get help?

Support systems and who does what

Student Services (Central UQ)

- Learning Assistance
- Disability Support
- Counselling Services
- International Student Services
- Careers & Employment Services
- Accommodation
- Multi-faith chaplaincy
- Lots of workshops for skill development & support

ALL FREE!

Questions.....?

Contact

School of Education

Room 403, Social Sciences Building (24)

The University of Queensland

E: education@uq.edu.au

P: 336 56550

W: <https://education.uq.edu.au/>

Office Hours

Monday/Wednesday/Friday 9:00am–1:00pm

Tuesday/Thursday 1:00pm–4:30pm



THE UNIVERSITY
OF QUEENSLAND
AUSTRALIA

Create change