



THE UNIVERSITY
OF QUEENSLAND
AUSTRALIA

CREATE CHANGE

Welcome to the Bachelor of Social Science & Bachelor of Arts / Social Science

With

- Program Director, **Associate Professor Sally Babidge**
- SoSS Student Admin team: Ms Claire Bishop & Ms Itsumi Miya-Jones

Acknowledgment of Country

The University of Queensland (UQ) acknowledges the Traditional Owners and their custodianship of the lands on which we meet.

We pay our respects to their Ancestors and their descendants, who continue cultural and spiritual connections to Country.

We recognise their valuable contributions to Australian and global society.





THE UNIVERSITY
OF QUEENSLAND
AUSTRALIA

CREATE CHANGE

Welcome from the Program Director

Associate Professor Sally Babidge

s.babidge@uq.edu.au

Michie Building (09)



What's happening today?

1. Welcome and key program info
2. Get to know your peers and key teaching staff
3. Key dates
4. School admin support
5. Opportunities and staying connected



Event!

We are holding a welcome to Semester 2 gathering and networking event for all enrolled B Soc Sci students

Come along next Friday (26th July, room 443 Michie Building) – 5pm to hear from Industry folk and meet and chat with other students.

Registration is free, but essential for catering purposes --

<https://events.humanitix.com/bachelor-soc-sci-students-industry-networking-event>

Social Science at UQ

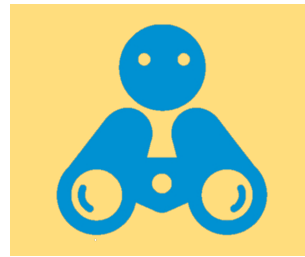
Social Scientists are interested in how human society works, how societies have come to be and how they are changing, as well as the ways in which they can be changed

- The Bachelor of Social Science is **multidisciplinary**
- Learning and teaching has an **applied** (research, practice and policy) focus
- Students collaborate with skilled practitioners, researchers and **industry**

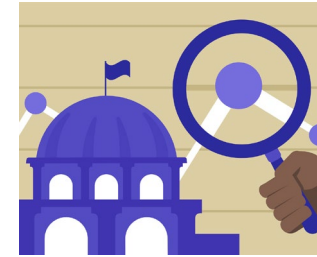
Disciplines look at challenges differently, but there are complementarities



Psychology



Anthropology



Political Science



Geography



Economics



Understanding your Program Structure

And Options: BSocSc or BA / BSocSc

Important terms



Your University
Central
Faculty (HASS =
Humanities, Arts
and Social Sciences)
School (School of
Social Science)



Your Degree
Program
Plan
– Minor
– Major
– Extended major



Your Courses
Course
– **Compulsory**
– Elective
Units
Course Profile
Blackboard / Learn.UQ

Graduate with a Bachelor of Social Science

You are required to complete:

- The 7 **core courses** from the BSocSc list (16 units)
- 8 courses (5 core) **in your chosen Major** (16 units), and
- up to 8 courses of **electives** (16 units) from the BSocSc course list

Note: no more than 14 units of elective courses can be at level 1 (course code starts with 1, e.g. SOSC1xxx).

Make sure to follow the rules and requirements of your program for the year you commenced!

<https://my.uq.edu.au/programs-courses>

Graduate with a Bachelor of Arts/ Social Science

- Design your program using the Dual Program Planner available on Programs and Courses (<https://my.uq.edu.au/programs-courses/>)
 - Search: BSocSc/BA

Take into account:

- For the BA you must complete 2 majors (each 8 courses/ 16 units), or an extended major (12 courses/ 24 units) and a minor (4 courses/ 8 units)
- For the BSocSc you must complete all core courses, a major and electives

Chulalongkorn University Students

- We look forward to our 4 semesters together!
- Enrolment planners are amended to meet the degree requirements of both UQ and Chula university
- Please ensure that you refer to the planner applicable to Chula students and the major that you have declared.
- The School team can assist student.socsci@uq.edu.au with your Chula-specific enrolment planners.

Course Levels DO matter

Level 1 Courses (e.g., SOSC1000, POLS1102)

Level 2 Course (e.g., SOCY2019, SOCY2339)

Level 3 Courses (e.g., SOSC3201, SOSC3202)

- Level 1 courses designed to provide foundation knowledge and skills to build on in Level 2 and 3 Courses
- Strongly suggest taking Level 1 courses before Level 2 and Level 3
- Assessments in upper level courses assume foundation knowledge and skills (e.g., are harder)
- Most courses are offered once per year, so planning your enrolment progression is important as mid-year entry students. The School team can assist student.socsci@uq.edu.au with your enrolment planners.

Applying for Credit for previous study?

Who has

- Transferred from a different degree?
- Added the BSocSci or BA as a dual component?
- Has eligible study that may be able to be credited towards the BSocSci?

Credit for previous study will impact your enrolment planner.

Credit for previous study is not always automatic, please check your studies reports to ensure that credit has been posted. Or if you are yet to apply for credit, please submit your application asap.

The School team can assist student.socsci@uq.edu.au with enrolment planning once your credit has been posted to ensure you are meeting pre-requisite courses, especially for the project courses in final year.

Using the Bachelor of Social Science as a study pathway towards a different Bachelor degree at UQ?

This is okay – although we do hope that you choose to stay with us!

Please note:

The program rules for the Bachelor of Social Science stipulate that students must complete their first 4 units from the BSocSc core course and / or BSocSc Major course list <https://my.uq.edu.au/programs-courses>

Should you have any questions about your BSocSc enrolment please contact the Student Admin team: student.socsci@uq.edu.au

Compulsory core courses from the BSocSc list in Year 1

SOSC1000 Society, Challenges & Solutions:
Introduction to the Social Sciences (offered in Sem 1)
– Dr Zoe Staines



POLS1102 Introduction to Politics & Public Policy (offered in Sem 1)
– A/Prof Alastair Stark



Compulsory core courses from the BSocSc list in Years 2 and 3

Year 2

SOCY2019 Introduction to Social Research

SOCY2339 Introducing Quantitative Research

Year 3

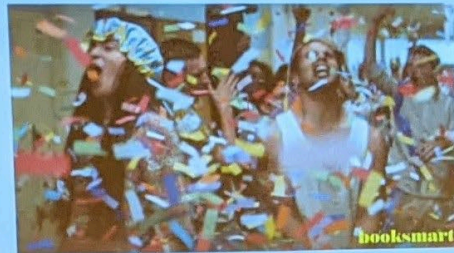
SOCY3329 Qualitative Social Research

[**SOSC3201** Research, Planning and Design + **SOSC3202** Project (#4)]

The Research Project Showcase in your final year

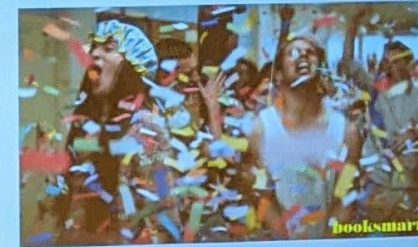
Go Celebrate!

But keep it COVID safe!



Go Celebrate!

But keep it COVID safe!



Bachelor of Social Science Majors



Development

Analyse the social effects of int'l and community development, with an emphasis on alleviating poverty & inequality and developing sustainable societies.



Environment & Society

Explore the intersections between socio-political processes and environmental problems, to address issues of climate change and waste.



Health & Social Policy

Investigate inequalities in health & illness while learning to develop, implement and evaluate policy solutions to produce positive change.

What do you study for a Development major?

Required Courses (10 units)

POLS1701 Introduction to International Inequality and Development

SOCY2220 Globalisation and Development in Post-Colonial Societies

SOSC2288 Community Development: Local and International Practices

ABTS3020 Working with Indigenous People

ANTH3019 Development Practice and Social Impact

Elective Courses (6 units) [sample]

SOCY1070 Inequality, Society and the Self

POLS2404 The Political Dynamics of Development and Resistance

POLS2603 Gender and Global Politics

What do you study for a Environment and Society major?

Required Courses (10 units)

ENVM1501 Introduction to Environmental Studies

ANTH2060 Ecology, Culture, and Field Research

SOCY2020 Sociology of the Environment

ABTS3020 Working with Indigenous People

POLS3115 Environmental Politics and Policy

Elective Courses (6 units) [sample]

GEOS1101 Environment & Society

SOCY2340 An Urban World

ENVM3115 Climate Change & Environmental
Management

What do you study for a Health and Social Policy major?

Required Courses (10 units)

SOCY1030 Introduction to Health, Illness and Society

SWSP1013 Australian Social Policy

ANTH2250 Medical Anthropology: Local and Global Perspectives

ABTS3020 Working with Indigenous People

POLY3000 Policy Development and Practice

Elective Courses (6 units) [sample]

PUBH1103 Health Systems and Policy

POLS1102 Political Problems and Public Policy

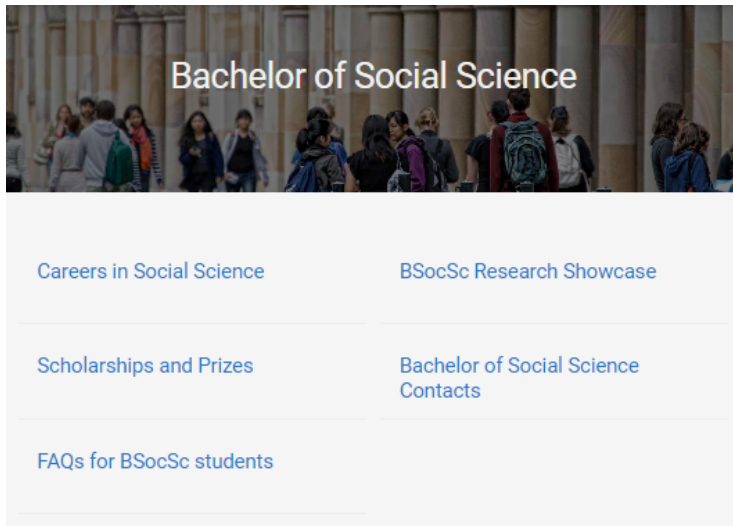
SOSC2190 Human Bodies, Culture and Society

UQ Program Planner

The Program Planner is a tool that allows you to plan courses for your program and ensure that the plan meets the program's completion rules and chosen structure.



BSocSc Website



You will receive updates on program activities and news via your student email. You can access information on the program via the website.

Why choose Bachelor of Social Science

UQ's Bachelor of Social Science degree is unique in its approach and delivery, with a strong grounding in social justice, policy research, and strong links to industry. It provides a foundation of knowledge about key social issues and problems, while also fostering practice-based skill development for immediate entry into the workforce, including skills in public policy design and evaluation, social impact assessment, social planning and research.

The Bachelor of Social Science provides a diversity of skills that will enable you to work in areas that address pressing social issues at local, national and international levels. Amongst these are rising poverty and inequality, the gender pay gap, homelessness, unemployment, Indigenous peoples and injustice, health and illness, refugees and the social impacts of climate change. Graduates develop skills, values and knowledge that are sought after by employers in the public and private sector, as well as non-government organisations, including the ability to communicate effectively across diverse audiences, theoretically informed cross-cultural awareness, social research skills, and a strong ethical compass. Course work provides in-depth knowledge and skills related to social issues, the ability to identify and analyse social issues and problems, and to develop solutions based in policy and practice.

<https://social-science.uq.edu.au/undergraduate/socialscience>

Preparing for your courses

Course enrolment & tutorial sign-on

- Log into [Starting at UQ](#). Go to mySI-net to enrol in courses.
- myTimetable is where you can view your timetable. It's also used to preference and allocate into classes (where there are multiples activities, such as tutorials)
- New video tutorials for class timetabling [Enrolment and class allocation - my.UQ - University of Queensland](#)
- If you have a problem with sign-on, email student.socsci@uq.edu.au

Textbooks

Wait until Week 1 to work out what textbooks you should get

- **Buy:** [The School Locker](#) or [Second-hand Texts & Stationary](#)
- **Print:** [UQ Print](#)
- **Borrow:** [UQ Library](#)

Important dates

Monday 15 July - Friday 19 July

Orientation Week for Semester 2, 2024

Monday 22 July

First day of classes for Semester 2, 2024

Friday 2 August

Last day to add a course for Semester 2, 2024

Saturday 31 August

Census Date

Last date to **drop** Semester 2, 2024 courses or cancel enrolment without **financial** liability

Monday 30 September

Last date to **drop** a course for Semester 2, 2024 or cancel enrolment without **academic** liability

School of Social Science Library Services

Get help with:

- Finding assignment resources
- Search strategies and using databases
- Book purchase requests
- Referencing
- Using EndNote

Debbie Martin

Liaison Librarian

d.martin@library.uq.edu.au



Or visit library.uq.edu.au



Photo by [Maya Maceka](#) on [Unsplash](#)

Get support

HASS Student Administration Team

- Degree questions
- Credit requests
- Academic progress
- Overseas study approval

Contact

hass.uq.edu.au/contact

School Student Administration Team

- Course questions
- Timetables
- Assessment

Contact

hass.uq.edu.au/your-academic-resources

HASS Student Futures Team

- Extra-curricular opportunities
- Career mentoring and seminars
- Leadership development

Contact

hass.uq.edu.au/enrich-your-study-experience

UQ Student Services

- Learning assistance
- Disability support
- Counselling
- International student services
- Accommodation
- Multi-faith chaplaincy

Contact

my.uq.edu.au/student-support

BSocSc Administration

Student Admin Team
School of Social Science
Level 3, Michie Building (#9)
student.socsci@uq.edu.au

- Enrolment planning
- Questions about courses
- Assessment – SoSS extension requests, deferred examination applications
- How to contact academic staff
- UG Social Science Events
- Support for student society
- Anything really – we can help point you in the right direction!

Our main office is on level 3 of the Michie Building

Open 9am-12pm & 1pm-4pm Mon-Fri.



Claire Bishop

- UQ ALLY
- Accredited
Mental Health
First Aider™



Itsumi
Miya-Jones

EQUITY, DIVERSITY, & SAFETY

**We are committed to a safe and supportive environment
and a positive culture for all.**

- **Dr Jenny Munro** - dedicated **Diversity and Equity Officer**, in School of Social Science
- Available to help any students or staff in relation to equity issues, grievances, complaint processes, bullying, sexual harassment and assault
- Jenny is not a counsellor but she can provide a safe space and a useful starting place to work out what options are available. If you have any concerns or queries, are unsure who to talk to, or are simply feeling uncomfortable about something that has happened, Jenny can help you find the information or support that you need
- Please contact Jenny directly via email at jenny.munro@uq.edu.au to find out more about the role, or to make a time for a confidential discussion.

- Equity issues
- Grievances
- Complaint processes
- Bullying
- Sexual harassment
- Assault



**RESPECT.
NOW.
ALWAYS.**

UQ Respect

Sexual Consent Ethical Bystanding and Compassionate Response Online Module

To get support or for more
information about **UQ Respect**, visit:
respect.uq.edu.au



Complete the module today:
bit.ly/UQ-Respect-Online-Module



If someone tells you they've been sexually assaulted or harassed:



Listen

I'm sorry this happened to you.



Support

This is not your fault.



Refer

There are people who can help you.

The **UQ Sexual Misconduct Support Unit (SMSU)** provides confidential assistance to survivors and their supporters.

respect.uq.edu.au/support • 3443 1000

In a campus emergency call **3365 3333**.
1800RESPECT for 24 hour support.

Stay Connected



UQ Humanities, Arts & Social Sciences

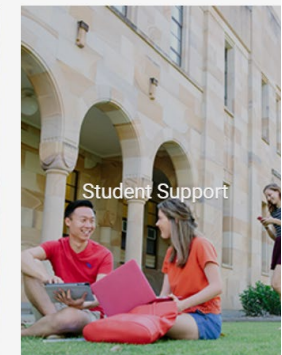
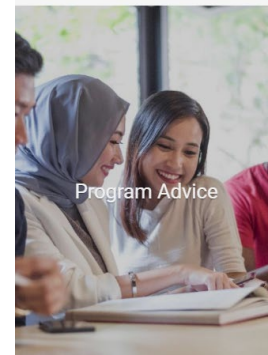
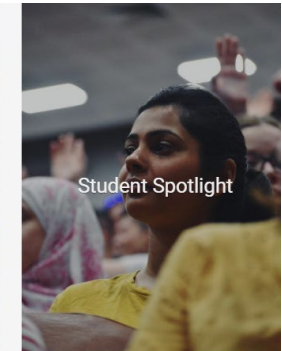
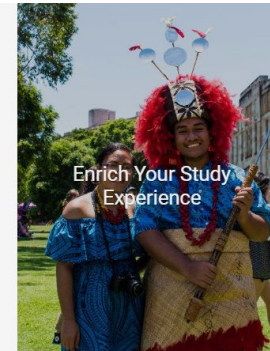
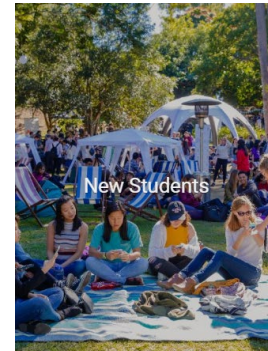


UQ Humanities, Arts & Social Sciences



@uqhasslife

The home of HASS online
linktr.ee/uqhasslife





Quick Survey

We really value your feedback as it allows us to improve for the future. Please complete this 3 minute survey.

