



Welcome to the Bachelor of Social Science & Bachelor of Arts / Social Science

With

- Program Director, **Associate Professor Sally Babidge**
- SoSS Student Admin team: Ms Claire Bishop & Ms Senaai Chapple

Acknowledgment of **Country**

The University of Queensland (UQ) acknowledges the Traditional Owners and their custodianship of the lands on which we meet.

We pay our respects to their Ancestors and their descendants, who continue cultural and spiritual connections to Country.

We recognise their valuable contributions to Australian and global society.





THE UNIVERSITY
OF QUEENSLAND
AUSTRALIA

CREATE CHANGE

Welcome from the Program Director

Associate Professor Sally Babidge

s.babidge@uq.edu.au

Michie Building (09)



What's happening today?

1. Welcome and key program info
2. Get to know your peers and key teaching staff
3. Key dates
4. School admin support
5. Opportunities and staying connected

Social Science at UQ

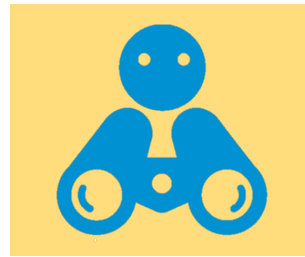
Social Scientists are interested in how human society works, how societies have come to be and how they are changing, as well as the ways in which they can be changed

- The Bachelor of Social Science is **multidisciplinary**
- Learning and teaching has an **applied** (research, practice and policy) focus
- Students collaborate with skilled practitioners, researchers and **industry**

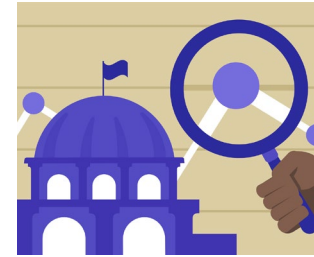
Disciplines look at challenges differently, but there are complementarities



Psychology



Anthropology



Political Science



Geography



Economics



Understanding your Program Structure

And Options: BSocSc or BA / BSocSc

Important terms



Your University
Central
Faculty (HASS =
Humanities, Arts
and Social Sciences)
School (School of
Social Science)



Your Degree
Program
Plan
– Minor
– Major
– Extended major



Your Courses
Course
– **Compulsory**
– Elective
Units
Electronic Course
Profile (ECP)
Blackboard / Learn.UQ

Graduate with a Bachelor of Social Science

You are required to complete:

- The 7 **core courses** from the BSocSc list (16 units)
- 8 courses (5 core) **in your chosen Major** (16 units), and
- up to 8 courses of **electives** (16 units) from the BSocSc course list

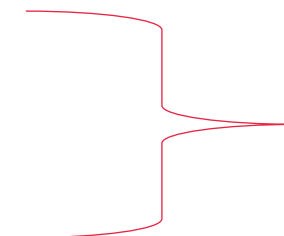
Note: no more than 14 units of elective courses can be at level 1 (course code starts with 1, e.g. SOSC1xxx).

Make sure to follow the rules and requirements of your program for the year you commence!

<https://my.uq.edu.au/programs-courses>

Core courses in the B Soc Sci – make sure you prioritise taking these **next Semester!**

Course code & name	Semester
SOSC 1000 Society, Challenges and Solutions	Sem 1
POLS1102 Political Problems and Public Policy	Sem 1
SOCY2019 Intro to Social Research	Sem 1
SOCY2339 Intro to Quant research	Sem 2
SOCY3329 Qualitative Social Research	Sem 1
SOSC3201 Research, Planning and Design (project)	Sem 1
SOSC3202 Project #4	Sem 2



These two courses must be taken in order-- with the Project course LAST

Compulsory core courses from the BSocSc list in Year 1

SOSC1000 Society, Challenges & Solutions:
Introduction to the Social Sciences (offered in Sem 1)
– Dr Zoe Staines



POLS1102 Introduction to Politics & Public Policy (offered in Sem 1)
– A/Prof Alastair Stark



Compulsory core courses from the BSocSc list in Years 2 and 3

Year 2

SOCY2019 Introduction to Social Research

SOCY2339 Introducing Quantitative Research

Year 3

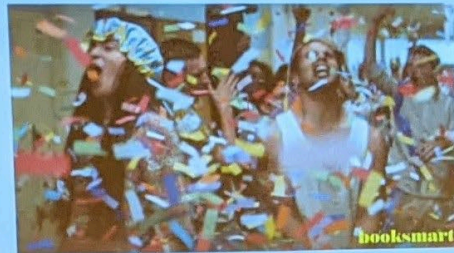
SOCY3329 Qualitative Social Research

[**SOSC3201** Research, Planning and Design + **SOSC3202** Project (#4)]

The Research Project Showcase in your final year

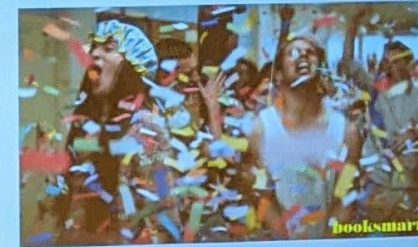
Go Celebrate!

But keep it COVID safe!



Go Celebrate!

But keep it COVID safe!



Bachelor of Social Science Majors



Development

Analyse the social effects of int'l and community development, with an emphasis on alleviating poverty & inequality and developing sustainable societies.



Environment & Society

Explore the intersections between socio-political processes and environmental problems, to address issues of climate change and waste.



Health & Social Policy

Investigate inequalities in health & illness while learning to develop, implement and evaluate policy solutions to produce positive change.

Core Courses in the majors

Development Major Core Courses	
POLS1701 Intro to International Inequality & Devel	Sem 1
SOCY2220 Globalisation & Development in Post-Colonial Societies	Sem 1
SOSC2288 Community Development: Local and International Practices	Sem 1
ABTS3020 Working with Indigenous People	Sem 2
ANTH3019 Development Practice and Social Impact	Sem 2

Environment & Society Major Core Courses	
ENVM1501 Introduction to Environmental Studies	Sem 1
ANTH2060 Ecology, Culture and Field Research	Sem 1
SOCY2020 Sociology of the Environment	Sem 2
ABTS3020 Working with Indigenous People	Sem 2
POLS3115 Environmental Politics and Policy	Sem 1

Health & Social Policy Major Core Courses	
SOCY1030 Intro to Health, Illness and Society	Sem 2
SWSP1013 Australian Social Policy	Sem 2
ANTH2250 Medical Anthropology	Sem 1
ABTS3020 Working with Indigenous People	Sem 2
POLY3000 Policy Development and Practice	Sem 1

What do you study for a Development major?

BSocSci
Core
Courses
(#16)

(as
before)

Required Courses (#10)

POLS1701 Introduction to International Inequality and Development
SOCY2220 Globalisation and Development in Post-Colonial Societies
SOSC2288 Community Development: Local and International Practices
ABTS3020 Working with Indigenous People
ANTH3019 Development Practice and Social Impact

Major Elective Courses (#6) – choose 3

SOCY1070 Inequality, Society and the Self -SEM 2
 ANTH2060 Ecology, Culture and Field Research
 POLS2101 Indigenous Politics and Policy
 POLS2402 International Political Economy
 POLS2404 The Political Dynamics of Development and Resistance
 POLS2603 Gender and Global Politics

PLUS

General
electives
#16

***eight
courses
from
almost
anywhere
across the
university*

What do you study for a Environment and Society major?

BSocSci
Core
Courses
(#16)

(as
before)

Required Courses (10 units)

ENVM1501 Introduction to Environmental Studies

ANTH2060 Ecology, Culture, and Field Research

SOCY2020 Sociology of the Environment – SEM 2

ABTS3020 Working with Indigenous People

POLS3115 Environmental Politics and Policy

Major Elective Courses (#6) – choose 3

PHIL2750 Economic Justice

SOCY2340 An Urban World

GEOS1100 Environment and Society – SEM 2

ENVM2100 Foundations of Sustainable Development

ARCS3118 Managing Cultural Heritage: Ethics, History and Practice

ENVM3115 Climate Change & Environmental Management

General
electives #16

**eight courses
from almost
anywhere
across the
university

What do you study for a Health and Social Policy major?

Required Courses (10 units)

Major Elective Courses (#6) – choose 3

BSocSci Core
Courses
(#16)

SOCY1030 Introduction to Health, Illness and Society – SEM 2

SWSP1013 Australian Social Policy – SEM2

ANTH2250 Medical Anthropology: Local and Global Perspectives

ABTS3020 Working with Indigenous People

POLY3000 Policy Development and Practice

ANTH1008 Being Human: Cultural Diversity and Experience – SEM 1/2
PUBH1103 Health Systems and Policy – SEM 2

POLS2101 Indigenous Politics & Policy

POLS2401 Politics & the Economy

PUBH2004 Understanding Health Behaviours

SOSC2190 Human Bodies, Culture and Society

POLS3102 Governance & Australian Public Policy

General
electives #16

**eight courses
from almost
anywhere
across the
university

(as before)

Graduate with a Bachelor of Arts/ Social Science

- Design your program using the Dual Program Planner available on Programs and Courses (<https://my.uq.edu.au/programs-courses/>)
 - Search: BSocSc/BA

Take into account:

- For the BA you must complete 2 majors (each 8 courses/ 16 units), or an extended major (12 courses/ 24 units) and a minor (4 courses/ 8 units)
- For the BSocSc you must complete all core courses, a major and electives

Using the Bachelor of Social Science as a study pathway towards a different Bachelor degree at UQ?

This is okay – although we do hope that you choose to stay with us!

Please note:

The program rules for the Bachelor of Social Science stipulate that students must complete their first 4 units from the BSocSc core course and / or BSocSc Major course list <https://my.uq.edu.au/programs-courses>

Should you have any questions about your BSocSc enrolment please contact the Student Admin team: student.socsci@uq.edu.au

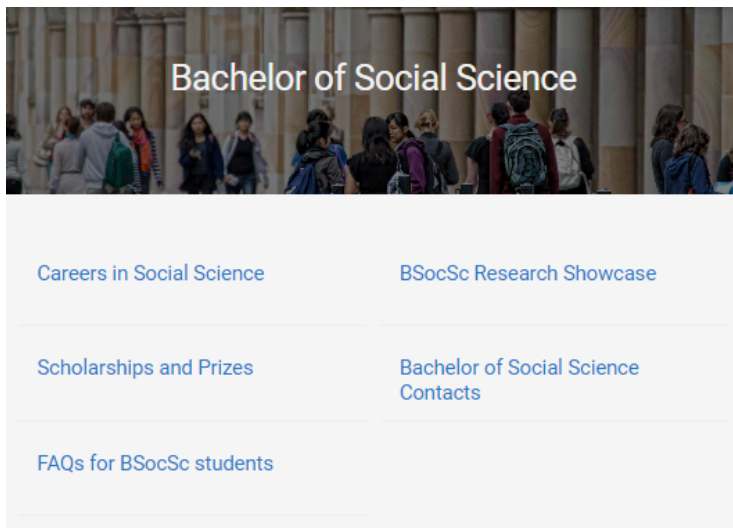
2025 Dual Program Study Planner Bachelors of Arts / Social Science (BA/BSocSc)

The Study Planner is a tool that allows you to plan courses for your program and ensure that the plan meets the program's completion rules and chosen structure:

<https://www.uq.edu.au/study/docs/dual-degree-planners-2025/2025-Bachelors-of-Arts-Social-Science-2505.pdf>



BSocSc Website



Why choose Bachelor of Social Science

UQ's Bachelor of Social Science degree is unique in its approach and delivery, with a strong grounding in social justice, policy research, and strong links to industry. It provides a foundation of knowledge about key social issues and problems, while also fostering practice-based skill development for immediate entry into the workforce, including skills in public policy design and evaluation, social impact assessment, social planning and research.

The Bachelor of Social Science provides a diversity of skills that will enable you to work in areas that address pressing social issues at local, national and international levels. Amongst these are rising poverty and inequality, the gender pay gap, homelessness, unemployment, Indigenous peoples and injustice, health and illness, refugees and the social impacts of climate change. Graduates develop skills, values and knowledge that are sought after by employers in the public and private sector, as well as non-government organisations, including the ability to communicate effectively across diverse audiences, theoretically informed cross-cultural awareness, social research skills, and a strong ethical compass. Course work provides in-depth knowledge and skills related to social issues, the ability to identify and analyse social issues and problems, and to develop solutions based in policy and practice.

You will receive updates on program activities and news via your student email. You can access information on the program via the website.

<https://social-science.uq.edu.au/undergraduate/socialscience>

Preparing for your courses

Important dates

Monday 21 July - Friday 25 July

Orientation Week for Semester 2, 2025

Monday 28 July

First day of classes for Semester 2, 2025

Friday 8 August

Last day to add a course for Semester 2, 2025

Sunday 31 August

Census Date

Last date to **drop** Semester 2, 2025 courses or cancel enrolment without **financial** liability

Tuesday 30 September

Last date to **drop** a course for Semester 2, 2025 or cancel enrolment without **academic** liability

Course enrolment & tutorial sign-on

- Log into [Starting at UQ](#). Go to mySI-net to enrol in courses.
- myTimetable is where you can view your timetable. It's also used to preference and allocate into classes (where there are multiples activities, such as tutorials)
- New video tutorials for class timetabling [Enrolment and class allocation - my.UQ - University of Queensland](#)
- If you have a problem with sign-on, email student.socsci@uq.edu.au

Textbooks

Wait until Week 1 to work out what textbooks you should get

- **Buy:** [The School Locker](#) or [Second-hand Texts & Stationary](#)
- **Print:** [UQ Print](#)
- **Borrow:** [UQ Library](#)

School of Social Science Library Services

Get help with:

- Finding assignment resources
- Search strategies and using databases
- Book purchase requests
- Referencing
- Using EndNote

Debbie Martin

Liaison Librarian

d.martin@library.uq.edu.au



Or visit library.uq.edu.au



Photo by [Maya Maceka](#) on [Unsplash](#)

Get support

HASS Student Administration Team

- Degree questions
- Credit requests
- Academic progress
- Overseas study approval

Contact

hass.uq.edu.au/contact

School Student Administration Team

- Course questions
- Timetables
- Assessment

Contact

hass.uq.edu.au/your-academic-resources

HASS Student Futures Team

- Extra-curricular opportunities
- Career mentoring and seminars
- Leadership development

Contact

hass.uq.edu.au/enrich-your-study-experience

UQ Student Services

- Learning assistance
- Disability support
- Counselling
- International student services
- Accommodation
- Multi-faith chaplaincy

Contact

my.uq.edu.au/student-support

BSocSc Administration

Student Admin Team
School of Social Science
Level 3, Michie Building (#9)
student.socsci@uq.edu.au

- Enrolment planning
- Questions about courses
- Assessment – SoSS extension requests, deferred examination applications
- How to contact academic staff
- UG Social Science Events
- Support for student society
- Anything really – we can help point you in the right direction!

Our main office is on level 3 of the Michie Building

Open 9am-12pm & 1pm-4pm Mon-Fri.



Claire Bishop

- UQ ALLY
- Accredited
Mental Health
First Aider™



Itsumi
Miya-Jones



Senaai
Chapple

EQUITY, DIVERSITY, & SAFETY

**We are committed to a safe and supportive environment
and a positive culture for all.**

- **Dr Jenny Munro** - dedicated **Diversity and Equity Officer**, in School of Social Science
- Available to help any students or staff in relation to equity issues, grievances, complaint processes, bullying, sexual harassment and assault
- Jenny is not a counsellor but she can provide a safe space and a useful starting place to work out what options are available. If you have any concerns or queries, are unsure who to talk to, or are simply feeling uncomfortable about something that has happened, Jenny can help you find the information or support that you need
- Please contact Jenny directly via email at jenny.munro@uq.edu.au to find out more about the role, or to make a time for a confidential discussion.

- Equity issues
- Grievances
- Complaint processes
- Bullying
- Sexual harassment
- Assault



**RESPECT.
NOW.
ALWAYS.**

Stay Connected



UQ Humanities, Arts & Social Sciences

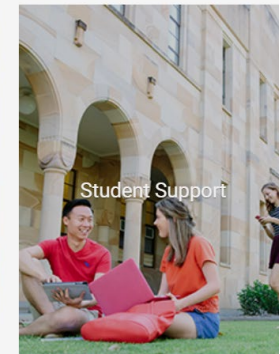
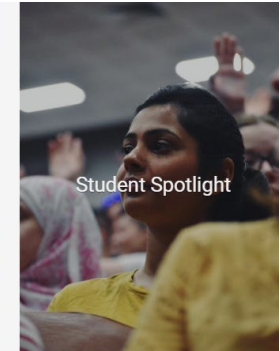
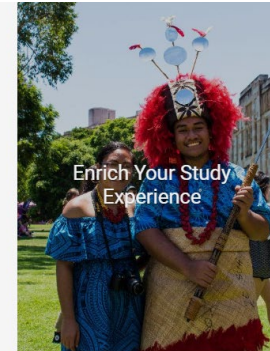
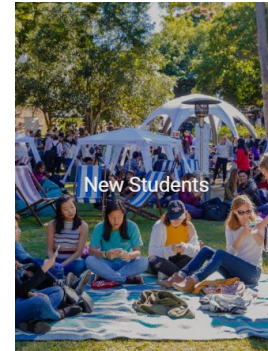


UQ Humanities, Arts & Social Sciences



@uqhasslife

The home of HASS online
linktr.ee/uqhasslife





Quick Survey

We really value your feedback as it allows us to improve for the future.
Please complete this 2-minute survey.

