



THE UNIVERSITY  
OF QUEENSLAND  
AUSTRALIA

CREATE CHANGE

# BCCJ(Hons) – Welcome to your Honours year!

With Dr Glenys McGowan and the Criminology crew



# Acknowledgment of Country

The University of Queensland (UQ) acknowledges the Traditional Owners and their custodianship of the lands on which we meet.

We pay our respects to their Ancestors and their descendants, who continue cultural and spiritual connections to Country.

We recognise their valuable contributions to Australian and global society.



# What's happening today?

1. Welcome and key honours information
2. Hello to your supervisors
3. Opportunities and staying connected





# Why honours?

Research skills that you learn in honours can help you in a variety of different jobs

You get to demonstrate your use of **complex problem-solving, critical thinking, creativity**, as well as **initiative** and **self-discipline**

You get to demonstrate your ability to **work independently** to **manage and complete a significant piece of work**

It gives you the opportunity to see what doing a PhD/research job might be like

It's challenging but achievable



# Program Structure

Semester One			Semester Two		
<i>Code</i>	<i>Title</i>	<i>Units</i>	<i>Code</i>	<i>Title</i>	<i>Units</i>
<b>HHSS6000</b>	Research Design	2	<b>HHSS6002</b>	Work Integrated Project	2
<b>HHSS6001</b>	Advanced Disciplinary Studies & Practices 1	2	<b>HHSS6003</b>	Advanced Disciplinary Studies & Practices 2	2
<b>CRIM4103</b>	Criminology and Criminal Justice Research Thesis Part A	4	<b>CRIM4103</b>	Criminology and Criminal Justice Research Thesis Part B	4

# Coursework

## Semester 1

- **HHSS6000: Research Design**
  - Advanced research skills to design and manage your project
- **HHSS6001: Advanced Disciplinary Studies & Practices 1**
  - Framework for gaining advanced skills and knowledge in relevant discipline
  - Different streams available

## Semester 2

- **HHS6002: Work Integrated Project**
  - Industry experience relevant to research project
  - Different streams available
- **HHSS6003: Advanced Disciplinary Studies & Practices 2**
  - Framework for gaining further skills and knowledge in relevant discipline
  - Different streams available



# CRIM4103 – Criminology and Criminal Justice Research Thesis

- Conduct a study as negotiated with your assigned thesis supervisor to produce an individual thesis, based on topics/projects students (in consultation with your thesis advisor) choose.
- Your study may relate to or target an industry sector, a specific criminal justice topic, or advance theoretical approaches.
- Academic thesis advisors will guide you through your project and any interactions with industry.
- Your opportunity to demonstrate that you can take carriage of a project and complete it on time.

# Thesis Requirements

**Thesis length = 8,000 – 10,000 words**

**Thesis due date = 2pm Friday 13<sup>th</sup> October**

Thesis structure = *see Blackboard*

- *Generally:* Abstract, Introduction and Literature Review, Methods, Results, Discussion
- Pay attention to formatting requirements

It's the work of a student researcher

You must demonstrate a high level of familiarity with your topic

Competence with your chosen method

It must be very well written, structured and referenced

You don't have to create 'new knowledge' at this level



**AND I WILL WRITE 500 WORDS**

**AND I WILL WRITE 500 MORE**



# Using AI Tools to Write Your Thesis

Can I use AI tools to write my thesis?

**Yes**, but you **must declare that in writing** at the front of your thesis.

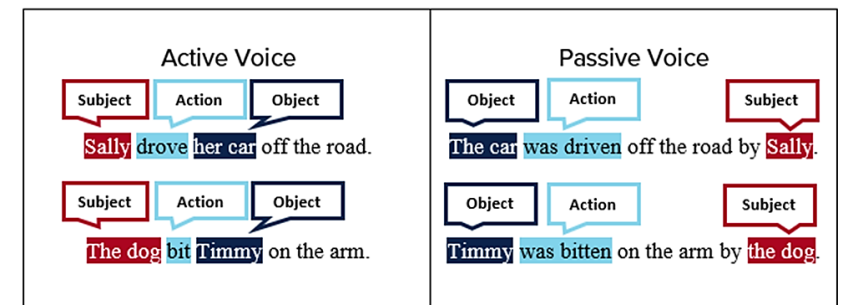
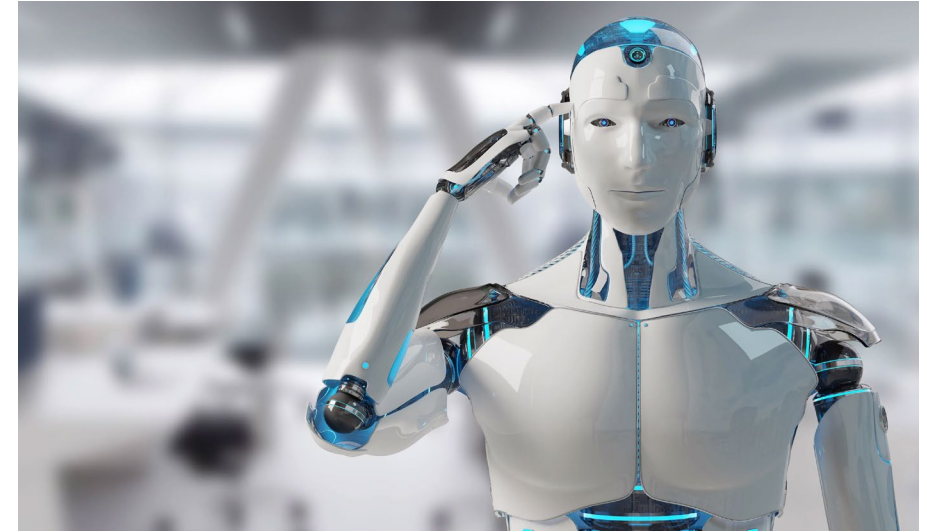
Should I use AI tools to write my thesis?

**No**. You will waste too much time fixing up the text

**Why?**

- AI tools draw on the whole internet, so the resulting text may contain errors, fake news, racist and socially inappropriate language, and may include irrelevant/non-academic content
- The text is often verbose and waffly (academic writing needs to be succinct and to the point)
- AI tools are incapable of critical thinking, synthesis of complex ideas, and using theory to interpret findings

Refer to the marking criteria for the thesis: An AI would struggle to achieve well.



# Calculation of Class of Honours

- Calculated from the weighted grades for all courses contributing to Honours (#16):
  - **HHSS6000** = #2 (12.5%)
  - **HHSS6001** = #2 (12.5%)
  - **HHSS6002** = #2 (12.5%)
  - **HHSS6003** = #2 (12.5%)
  - Thesis (**CRIM4103**) = #8 (50%)
- Class of Honours is determined centrally, so the School or your thesis advisors are unable to tell you!

GPA	Class of Honours
6.200 – 7.000	Class I
5.650 – 6.199	Class IIA
5.000 – 5.649	Class IIB
4.000 – 4.999	Class IIIA
<4.000	Class IIIB

# Thesis Marking Criteria

Criteria	Descriptor
<b>Setting out the research problem or issue to be addressed</b> (15 marks)	Clear outline of research question/issue set in literature; rationale and significance explained; thesis structure outlined; results foreshadowed.
<b>Theoretical / conceptual approach</b> (15 marks)	Demonstrated understanding of relevant concepts, engaging appropriate literature.
<b>Methodology, methods, case materials, empirical data</b> (15 marks)	Research strategy/methodological orientation established using literature; data types/case studies/textual sources/etc. identified; methods used clearly set out, described, and justified.
<b>Critical analysis and discussion</b> (30 marks)	Critical analysis of specific empirical/conceptual materials is logical, well ordered, and contextualised in the theoretical/ methodological literature. Explication of results discussed in the context of literature; wider implications explored and limitations acknowledged.
<b>Thesis presentation</b> (20 marks)	The thesis demonstrates an overall coherence and line of argument; thesis is concise, precise, and well articulated; writing is stylistically consistent; spelling and grammar correct; references complete and correct; layout, figures, tables, maps, photographs, etc. are clear and correctly labelled and relevant to the thesis topic.
<b>Scholarship</b> (5 marks)	Originality/innovation; creativity of the study (e.g., original/innovative use of theory, methods etc)
<b>TOTAL</b> (100 marks)	

# Key Dates/Milestones

<b>February</b>	( <i>asap</i> ) Start scheduling regular meetings with your thesis advisor
<b>March</b>	( <i>asap</i> ) Ethics application to be submitted to UQ committee ( <i>asap</i> ) Make sure that all relevant approvals are in place within Agency (if relevant)
<b>April</b>	10 <sup>th</sup> – 16 <sup>th</sup> – Mid-semester break
<b>May</b>	various goals and deadlines – depending on your project...
<b>June</b>	Semester break – be aware that this may be time to spend on data collection/analysis
<b>July</b>	( <i>no later than</i> ) 28 <sup>th</sup> – First draft Introduction/Literature Review should be submitted to thesis advisors
<b>August</b>	various goals and deadlines – depending on your project...
<b>September</b>	15 <sup>th</sup> – Last date to submit drafts for thesis advisor feedback
<b>October</b>	13 <sup>th</sup> – Thesis submission due date
<b>November</b>	Finalisation of coursework – this is important as it counts towards your overall honours grade
<b>December</b>	Grade release

# Important dates

**February 20**

First day of classes for Semester 1 2023

---

**March 3**

Last day to add a course for Semester 1 2023

---

**March 31**

Due date for Academic Integrity Modules – Part A

---

**March 31**

**“The Census Date”**

Last date to **drop** Semester 1 2023 courses or cancel enrolment  
without **financial** liability

---

**April 30**

Last date to **drop** a course for Semester 1 2023 or cancel enrolment  
without **academic** liability

---

**June 30**

Due date for Academic Integrity Modules – Part B

---



# Expectations

Please read the information on the Blackboard page  
and complete the Student-Supervisor Checklist

## General expectations

- You should expect to meet with your thesis advisor/s regularly
- You should be professional and prompt with emails
- If you are involved in an Industry project, you should expect to negotiate your topic to fit the needs of all stakeholders involved – but this will vary from project to project

## Thesis Assistance

- Your thesis advisor is there to support you in your project – but it is YOUR project
- Thesis advisors **reading** of drafts is LIMITED, but **discussions** should be taking place regularly
  - make the most of the readings you do have – ask questions, submit your “best” draft, be prepared to make suggested changes

# Ethics

Key point – **START EARLY**

You cannot begin any research activities until you have secured ethics/exemption!!

The fundamental principles will be covered in your first HHSS6000 class

But you can begin to think about this process **now** – check out:

- UQ Human Ethics or HASS Faculty LNR Ethics Committee Information
  - <http://www.uq.edu.au/research/integrity-compliance/low-and-negligible-risk-reviews>
- National Statement on Ethical Conduct in Human Research (2007) - Updated 2018
  - <https://nhmrc.gov.au/about-us/publications/national-statement-ethical-conduct-human-research-2007-updated-2018>

# Industry Engagement

**Check** with your thesis advisor about requirements for:

- Confidentiality and IP
  - You may wish to seek your own legal advice regarding these documents, eg via <http://www.uqu.com.au/legal>
- Criminal History Checks
- Risk Assessments
- Approving final thesis submissions
- Any other specific requirements of that the agency might have

If you will be spending time with an Industry partner, remember:

- Dress and conduct yourself appropriately for the workplace
- This is an opportunity for you to network and make a (good) impression
- The time you spend within the industry will be limited to the kinds of tasks relevant to your project
  - if you wish to gain other experiences you may wish to speak with the industry partner about other possible opportunities

# Thesis Extensions

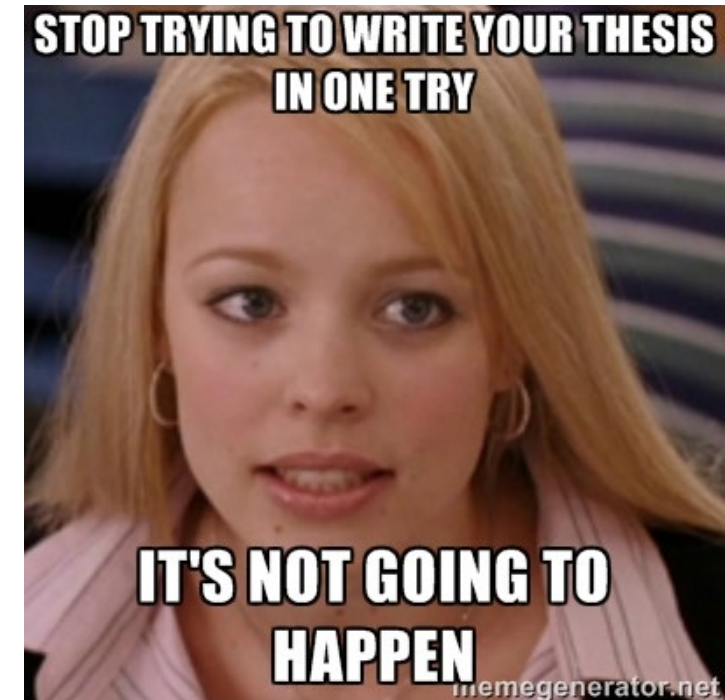
Remember, your thesis is a year-long\* project

- It cannot be completed overnight/in a short time period
- There is only one thesis due date, but be aware of milestones along the way
- You should develop clear timelines (in consultation with your supervisor/s) and stick to them
- If you see yourself slipping substantially from your timeline, talk to someone about this (i.e., thesis advisor, honours coordinator)

Extensions will only be granted in **exceptional** circumstances

Extensions may **impact your ability to graduate** on time

\* really, 6 months





# Where do I get help?

Support systems and who does what



# Where to get help

## Thesis Advisor

- Your academic thesis advisor is there to assist you and advise you in all matters relating to your project
- If you are having issues, they are your first port of call

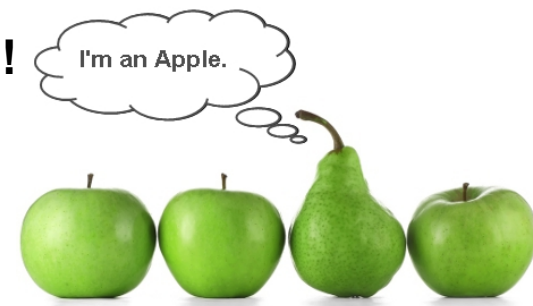
## Honours Coordinator

- If you have a problem that you want to speak about with someone other than your thesis advisor, or that you think might impact your ability to hand in your thesis in time, speak to the Honours Coordinator
- Contact: Dr Glenys McGowan ([g.mcgowan@uq.edu.au](mailto:g.mcgowan@uq.edu.au))

## Student Services

- Honours can be stressful, but support is available

**If things start to go pear-shaped, let us know as soon as possible!**



# Student Services (Central UQ)

- Learning Assistance
- Disability Support
- Counselling Services
- International Student Services
- Careers & Employment Services
- Accommodation
- Multi-faith chaplaincy
- Lots of workshops for skill development & support
- Located across from the main food outlets (specifically Boost & the Bakery)

ALL FREE!

# EQUITY, DIVERSITY, & SAFETY

**We are committed to a safe and supportive environment  
and a positive culture for all.**

- **Dr Jenny Munro** - dedicated **Diversity and Equity Officer**, in School of Social Science
- Available to help any students or staff in relation to equity issues, grievances, complaint processes, bullying, sexual harassment and assault
- Jenny is not a counsellor but she can provide a safe space and a useful starting place to work out what options are available. If you have any concerns or queries, are unsure who to talk to, or are simply feeling uncomfortable about something that has happened, Jenny can help you find the information or support that you need
- Please contact Jenny directly via email at [jenny.munro@uq.edu.au](mailto:jenny.munro@uq.edu.au) to find out more about the role, or to make a time for a confidential discussion.

- Equity issues
- Grievances
- Complaint processes
- Bullying
- Sexual harassment
- Assault



**RESPECT.  
NOW.  
ALWAYS.**

## Find study space at UQ

- [Use a 24/7 study space](#)
- [Book a study room](#)
- [Know what's available in the library](#)
- Check out Level 3 Forgan Smith Tower study space

## Join a student club

- [200+ UQ Union clubs and societies](#)
- Cultural, hobby/special interest, international, performance, religious, social justice, political, faculty and much more

# School of Social Science Library Services

Get help with:

- Finding assignment resources
- Search strategies and using databases
- Book purchase requests
- Referencing
- Using EndNote

**Debbie Martin**

Liaison Librarian

[d.martin@library.uq.edu.au](mailto:d.martin@library.uq.edu.au)



Or visit [library.uq.edu.au](http://library.uq.edu.au)



Photo by [Maya Maceka](#) on [Unsplash](#)



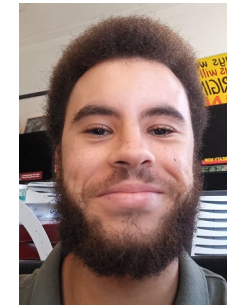
**Student Admin Team**  
**School of Social Science**  
Level 3, Michie Building (#9)  
[student.socsci@uq.edu.au](mailto:student.socsci@uq.edu.au)



Kirsten  
Hentschel



Claire  
Bishop



Kwame  
Eshun



Itsumi  
Miya-Jones

- Enrolment planning
- Questions about courses
- Assessment –extension requests, deferred examination applications
- How to contact academic staff
- UG Social Science Events
- Support for student society
- Anything really – we can help point you in the right direction!

**Our main office is on level 3 of the Michie Building**

**Open 9am-12pm & 1pm-4pm Mon-Fri.**

# HASS Welcome Weeks

## O Week

- Program Info Session
- HASS Welcome
- Student Admin Drop in's
- Missed out? Find resources on the website

## Connect Week

- Connect with your peers
- Attend a club or society event
- Grab some friends and join the Big Quiz

## Success Week

- Learn about how you can be a successful HASS student
- Discover the support services that you **SHOULD** access

## Employability Week

- Where can your program take you?
- Attend the networking night to meet peers and industry
- Register for the “How your HASS Skills Pay the Bills” event

# Get support

## HASS Student Administration Team

- Degree questions
- Credit requests
- Academic progress
- Overseas study approval

### Contact

[hass.uq.edu.au/contact](https://hass.uq.edu.au/contact)

## School Student Administration Team

- Course questions
- Timetables
- Assessment

### Contact

<https://social-science.uq.edu.au/student-support>

## HASS Student Futures Team

- Extra-curricular opportunities
- Career mentoring and seminars
- Leadership development

### Contact

[hass.uq.edu.au/enrich-your-study-experience](https://hass.uq.edu.au/enrich-your-study-experience)

## UQ Student Services

- Learning assistance
- Disability support
- Counselling
- International student services
- Accommodation
- Multi-faith chaplaincy

### Contact

[my.uq.edu.au/student-support](https://my.uq.edu.au/student-support)

# Stay Connected



UQ Humanities & Social Sciences



UQ Humanities & Social Sciences



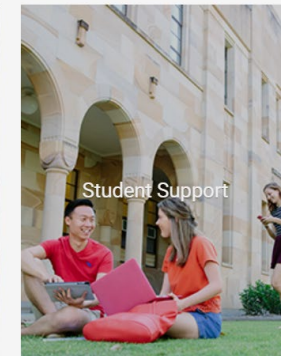
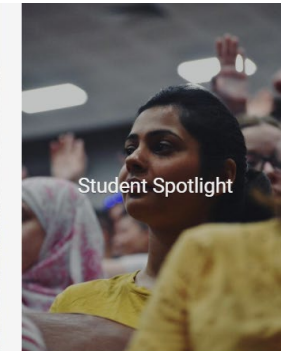
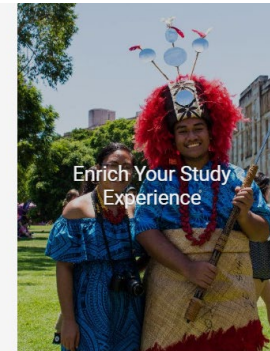
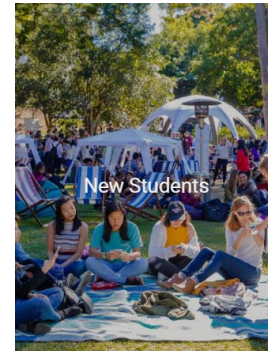
uqhasslife



How2HASS

The home of HASS online

[linktr.ee/uqhasslife](https://linktr.ee/uqhasslife)





Thank you!

Now let's meet your thesis advisor/s.....