



# Welcome to the Bachelor of Social Science & Bachelor of Arts / Social Science

With

- Program Director, **Dr Mair Underwood**
- SoSS Student Admin team: Ms Kirsten Hentschel, Ms Claire Bishop, Ms Itsumi Miya-Jones, Mr Kwame Eshun

# Acknowledgment of Country

The University of Queensland (UQ) acknowledges the Traditional Owners and their custodianship of the lands on which we meet.

We pay our respects to their Ancestors and their descendants, who continue cultural and spiritual connections to Country.

We recognise their valuable contributions to Australian and global society.



# Welcome from the Program Director

Dr Mair Underwood

[m.underwood@uq.edu.au](mailto:m.underwood@uq.edu.au)

Room 427, Michie Building (09)





# What's happening today?

1. Welcome and key program info
2. Get to know your peers and key teaching staff
3. Key dates
4. School admin support
5. Opportunities and staying connected

# Social Science at UQ

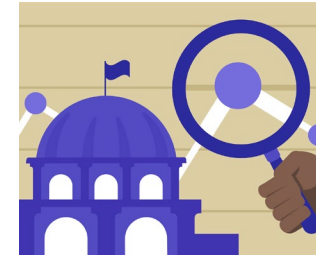
*Social Scientists are interested in how societies work, how they come to be the way they are and how they might be different*

- The Bachelor of Social Science is ***multidisciplinary***
- Learning and teaching has an ***applied (research and policy)*** focus
- Students collaborate with skilled practitioners, researchers and **industry**

# Disciplines look at challenges differently, but complementarily



**Psychology**



**Political Science**



**Anthropology**



**Geography**



**Economics**



THE UNIVERSITY  
OF QUEENSLAND  
AUSTRALIA

CREATE CHANGE

# Terminology

UQ, HASS Faculty, School of Social Science & BSocSci

# Important terms



**Your University**  
Central  
Faculty  
School



**Your Degree**  
Program  
Plan

- Minor
- Major
- Extended major



**Your Courses**  
Course

- Compulsory
- Elective

Unit  
ECP  
Blackboard



# Course & Program Related Terminology

HASS	=	Humanities and Social Sciences (our Faculty)	
Faculty	=	Home of related Schools	e.g. Humanities and Social Sciences
School	=	Home of related study areas	e.g. School of Social Science
Program	=	Degree or study area	e.g. Bachelor of Social Science
Major/Plan	=	Study Areas	e.g. Dev.   Hlth & Soc. Policy   Environ & Soc.
Course	=	Subject/Class	e.g. SOSOC1000
Unit (#)	=	Value of the course	e.g. 2 (almost always 2, SOSOC3202 is 4)
Semester	=	Duration of courses	e.g. approximately 16 weeks



# Understanding your Program Structure

And Options: BSocSc or BA / BSocSc

# Graduate with a Bachelor of Social Science

You are required to complete:

- The 7 **core courses** from the BSocSc list (16 units)
- 8 courses (5 core) **in your chosen Major** (16 units), and
- up to 8 courses of **electives** (16 units) from the BSocSc course list

*Note: no more than 14 units of elective courses can be at level 1 (course code starts with 1, e.g. SOSOC1xxx).*

**Make sure to follow the rules and requirements of your program for the year you commenced!**

<https://my.uq.edu.au/programs-courses>

# Graduate with a Bachelor of Arts/ Social Science

- Design your program using the Dual Program Planner available on Programs and Courses (<https://my.uq.edu.au/programs-courses/>)
  - Search: BSocSc/BA

## Take into account:

- For the BA you must complete 2 majors (each 8 courses/ 16 units), or an extended major (12 courses/ 24 units) and a minor (4 courses/ 8 units)
- For the BSocSc you must complete all core courses, a major and electives

# Using the Bachelor of Social Science as a study pathway towards a different Bachelor degree at UQ?

This is okay – although we do hope that you choose to stay with us!

Please note –

The program rules for the Bachelor of Social Science stipulate that students must complete their first 4 units from the BSocSc core course and / or BSocSci Major course list.

Should you have any questions about your BSocSc enrolment please contact the Student Admin team:  
[student.socsci@uq.edu.au](mailto:student.socsci@uq.edu.au)

# Compulsory core courses from the BSocSc list in Year 1

**SOSC1000** Society, Challenges & Solutions:  
Introduction to the Social Sciences (offered in Sem 1)  
– Dr Zoe Staines



**POLS1102** Introduction to Politics & Public Policy (offered in Sem 1)  
– A/Prof Alastair Stark



# Compulsory core courses from the BSocSc list in Years 2 and 3

## Year 2

**SOCY2019** Introduction to Social Research

**SOCY2339** Introducing Quantitative Research

## Year 3

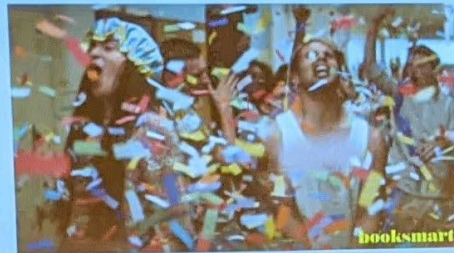
**SOCY3329** Qualitative Social Research

[**SOSOC3201** Research, Planning and Design + **SOSOC3202** Project (#4)]

# The Project Course Showcase

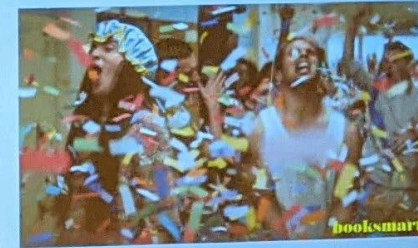
Go Celebrate!

But keep it COVID safe!



Go Celebrate!

But keep it COVID safe!







THE UNIVERSITY  
OF QUEENSLAND  
AUSTRALIA

CREATE CHANGE

# Understanding your Program Structure

And Options: Majors

# Bachelor of Social Science Majors



## Development

Analyse the social effects of int'l and community development, with an emphasis on alleviating poverty & inequality and developing sustainable societies.



## Environment & Society

Explore the intersections between socio-political processes and environmental problems, to address issues of climate change and waste.



## Health & Social Policy

Investigate inequalities in health & illness while learning to develop, implement and evaluate policy solutions to produce positive change.

# Development Major

Convenor:

Professor Katharine Gelber

[k.gelber@uq.edu.au](mailto:k.gelber@uq.edu.au)



# What do you study for a Development major?

## Required Courses (10 units)

**POLS1701** Introduction to International Inequality and Development

**SOCY2220** Globalisation and Development in Post-Colonial Societies

**SOSC2288** Community Development: Local and International Practices

**ABTS3020** Working with Indigenous People

**ANTH3019** Development Practice and Social Impact

## Elective Courses (6 units) [sample]

**ANTH2060** Ecology, Culture and Field Research

**SOCY2020** Sociology of the Environment

**POLS2404** The Political Dynamics of Development and Resistance

# Environment and Society Major

Convenor:

Professor Kristen Lyons

[kristen.lyons@uq.edu.au](mailto:kristen.lyons@uq.edu.au)



# What do you study for a Environment and Society major?

## Required Courses (10 units)

**ENVM1501** Introduction to Environmental Studies

**ANTH2060** Ecology, Culture, and Field Research

**SOCY2020** Sociology of the Environment

**ABTS3020** Working with Indigenous People

**POLS3115** Environmental Politics and Policy

## Elective Courses (6 units) [sample]

**GEOS1100** Environment and Society

**PHIL2210** Environmental Philosophy

**SOCY2340** An Urban World

# Health and Social Policy Major

Convenor:

Professor Katharine Gelber

[k.gelber@uq.edu.au](mailto:k.gelber@uq.edu.au)



# What do you study for a Health and Social Policy major?

## Required Courses (10 units)

**POLY1000** Australian Social Policy

**SOCY1030** Introduction to Health, Illness and Society

**POLS2101** Indigenous Politics and Policy

**POLY3000** Policy Development and Practice

**SOCY3020** Medicine, Markets and Health: Sociological Perspectives on Health and Illness

## Elective Courses (6 units) [sample]

**PUBH1103** Health Systems and Policy

**ANTH2250** Medical Anthropology: Local and Global Perspectives

**SOSC2190** Human Bodies, Culture and Society



# UQ Program Planner

The Program Planner is a tool that allows you to plan courses for your program and ensure that the plan meets the program's completion rules and chosen structure.



## Course enrolment & tutorial sign-on

- Log into [Starting at UQ](#). Go to mySI-net to enrol in courses.
- Once you are enrolled in a course, you should be able to see what class allocations are required in myTimetable.

## Textbooks

Wait until Week 1 to work out what textbooks you should get

- **Buy:** [The School Locker](#) or [Second-hand Texts & Stationary](#)
- **Print:** [UQ Print](#)
- **Borrow:** [UQ Library](#)

# Enrolling, Tutorials and Class Allocations

- First stop: 'Starting at UQ'.
- You can add / drop your courses on SI-net
- myTimetable is used to preference and allocate into classes. If you have options for tutorial times, you can preference classes prior to the university running the class allocation process.
- New video tutorials for class timetabling [Enrolment and class allocation - my.UQ - University of Queensland](#)
- If there is a problem with class allocation, e-mail the relevant faculty area for the owner of the course e.g. HASS Faculty = [hass.mytimetable@uq.edu.au](mailto:hass.mytimetable@uq.edu.au)
- If all else fails, myUQ has the answer or contact the School's student admin team: [student.socsci@uq.edu.au](mailto:student.socsci@uq.edu.au)



# Where do I get help?

Support systems and who does what

# Student Services (Central UQ)

- Learning Assistance
- Disability Support
- Counselling Services
- International Student Services
- Careers & Employment Services
- Accommodation
- Multi-faith chaplaincy
- Lots of workshops for skill development & support
- Located across from the main food outlets (specifically Boost & the Bakery)

ALL FREE!

# School of Social Science Library Services

Get help with:

- Finding assignment resources
- Search strategies and using databases
- Book purchase requests
- Referencing
- Using EndNote

**Debbie Martin**

Liaison Librarian

[d.martin@library.uq.edu.au](mailto:d.martin@library.uq.edu.au)



Or visit [library.uq.edu.au](http://library.uq.edu.au)



Photo by [Maya Maceka](#) on [Unsplash](#)

# Get support

## HASS Student Administration Team

- Degree questions
- Credit requests
- Academic progress
- Overseas study approval

### Contact

[hass.uq.edu.au/contact](https://hass.uq.edu.au/contact)

## School Student Administration Team

- Course questions
- Timetables
- Assessment

### Contact

<https://social-science.uq.edu.au/student-support>

## HASS Student Futures Team

- Extra-curricular opportunities
- Career mentoring and seminars
- Leadership development

### Contact

[hass.uq.edu.au/enrich-your-study-experience](https://hass.uq.edu.au/enrich-your-study-experience)

## UQ Student Services

- Learning assistance
- Disability support
- Counselling
- International student services
- Accommodation
- Multi-faith chaplaincy

### Contact

[my.uq.edu.au/student-support](https://my.uq.edu.au/student-support)

# BSocSc Administration

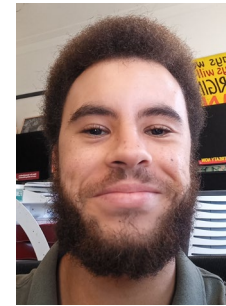
**Student Admin Team**  
**School of Social Science**  
Level 3, Michie Building (#9)  
[student.socsci@uq.edu.au](mailto:student.socsci@uq.edu.au)



Kirsten  
Hentschel



Claire  
Bishop



Kwame  
Eshun



Itsumi  
Miya-Jones

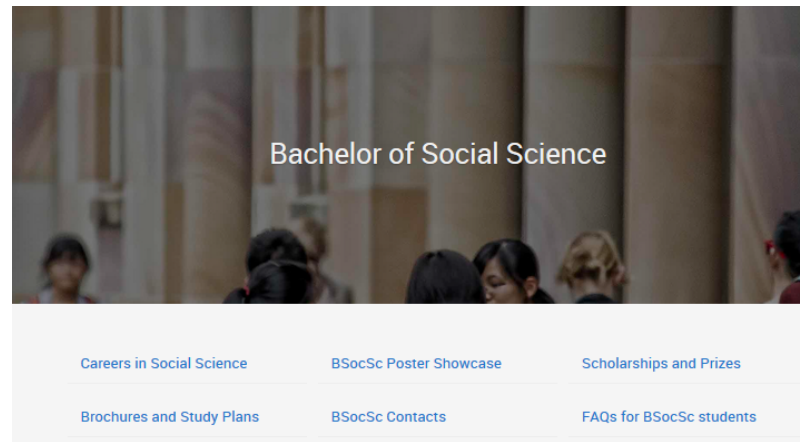
- Enrolment planning
- Questions about courses
- Assessment – SoSS extension requests, deferred examination applications
- How to contact academic staff
- UG Social Science Events
- Support for student society
- Anything really – we can help point you in the right direction!

**Our main office is on level 3 of the Michie Building**

**Open 9am-12pm & 1pm-4pm Mon-Fri.**



# BSocSc Website



**You will receive updates on program activities and news via your student email. You can access information on the program via the website.**

## Why choose Bachelor of Social Science

UQ's Bachelor of Social Science degree is unique in its approach and delivery, with a strong grounding in social justice, policy research, and strong links to industry. It provides a foundation of knowledge about key social issues and problems, while also fostering practice-based skill development for immediate entry into the workforce, including skills in public policy design and evaluation, social impact assessment, social planning and research.

The Bachelor of Social Science provides a diversity of skills that will enable you to work in areas that address pressing social issues at local, national and international levels. Amongst these are rising poverty and inequality, the gender pay gap, homelessness, unemployment, indigenous peoples and injustice, health and illness, refugees and the social impacts of climate change. Graduates develop skills, values and knowledge that are sought after by employers in the public and private sector, as well as non-government organisations, including the ability to communicate effectively across diverse audiences, theoretically informed cross-cultural awareness, social research skills, and a strong ethical compass. Course work provides in-depth knowledge and skills related to social issues, the ability to identify and analyse social issues and problems, and to develop solutions based in policy and practice.

### Development

Students are provided with a social science perspective on international and community development issues. Students focus on strategies to alleviate poverty and inequality and develop sustainable societies, communities and environments.

### Health and Society

Students gain an understanding of the social and ethical factors influencing health and illness. Focus is placed on the way the health system works, and gaining the skills relevant to becoming a social science worker in health care.

### Social and Public Policy

Studies in policy connect the social sciences to the world of practical politics. Students gain the technical skills required to analyse social and economic issues and develop, implement and evaluate policy solutions.

### Environment and Society

Students will learn about the relationships between environmental problems - such as climate change, waste and land clearing - and broader social, political and economic contexts. With new analytical and research skills, graduates can work in policy making, environmental and science communication, international development and elsewhere.



# Important Dates

Write these down!

# Important dates

**February 20**

First day of classes for Semester 1 2023

---

**March 3**

Last day to add a course for Semester 1 2023

---

**March 31**

Due date for Academic Integrity Modules – Part A

---

**March 31**

**“The Census Date”**

Last date to **drop** Semester 1 2023 courses or cancel enrolment  
without **financial** liability

---

**April 30**

Last date to **drop** a course for Semester 1 2023 or cancel enrolment  
without **academic** liability

---

**June 30**

Due date for Academic Integrity Modules – Part B

---



THE UNIVERSITY  
OF QUEENSLAND  
AUSTRALIA

CREATE CHANGE

# Your Opportunities in HASS and settling into university life

# HASS Welcome Weeks

## O Week

- Program Info Session
- HASS Welcome
- Student Admin Drop in's
- Missed out? Find resources on the website

## Connect Week

- Connect with your peers
- Attend a club or society event
- Grab some friends and join the Big Quiz

## Success Week

- Learn about how you can be a successful HASS student
- Discover the support services that you **SHOULD** access

## Employability Week

- Where can your program take you?
- Attend the networking night to meet peers and industry
- Register for the “How your HASS Skills Pay the Bills” event

# Common Questions about uni life

- **UQ facilities:** *Where's the best place on campus to attend online lectures/tutorials? Where's the best place to get coffee/food?*
- **Social activities:** *How do I join a student club? How can I get involved in uni life both on and off campus?*
- **General tips for new students:** *What is your top tip for starting out at UQ?*

## Find study space at UQ

- [Use a 24/7 study space](#)
- [Book a study room](#)
- [Know what's available in the library](#)
- Check out Level 3 Forgan Smith Tower study space

## Join a student club

- [200+ UQ Union clubs and societies](#)
- Cultural, hobby/special interest, international, performance, religious, social justice, political, faculty and much more

# EQUITY, DIVERSITY, & SAFETY

**We are committed to a safe and supportive environment  
and a positive culture for all.**

- **Dr Jenny Munro** - dedicated **Diversity and Equity Officer**, in School of Social Science
- Available to help any students or staff in relation to equity issues, grievances, complaint processes, bullying, sexual harassment and assault
- Jenny is not a counsellor but she can provide a safe space and a useful starting place to work out what options are available. If you have any concerns or queries, are unsure who to talk to, or are simply feeling uncomfortable about something that has happened, Jenny can help you find the information or support that you need
- Please contact Jenny directly via email at [jenny.munro@uq.edu.au](mailto:jenny.munro@uq.edu.au) to find out more about the role, or to make a time for a confidential discussion.

- Equity issues
- Grievances
- Complaint processes
- Bullying
- Sexual harassment
- Assault



**RESPECT.  
NOW.  
ALWAYS.**



# Stay Connected



UQ Humanities & Social Sciences



UQ Humanities & Social Sciences



uqhasslife



How2HASS

The home of HASS online  
[linktr.ee/uqhasslife](https://linktr.ee/uqhasslife)

